

Euphonium in B $\flat$  (T.C.) 「ラピュタ」～キャッスル・イン・ザ・スカイ～

"LAPUTA" Castle in the Sky

Joe Hisaishi  
arr. by Kazuhiro Morita

**Misterioso**  $\text{♩} = 120 \text{ ca.}$

9 **A** **Moderato**  $\text{♩} = 100 \text{ ca.}$

20 **C**

26 **D**

31 **E**

37 **F**

43 **Largo**  $\text{♩} = 44 \text{ ca.}$  unis. **E**

48 **F**

54 **F**

59 **F**

Euphonium in B<sup>b</sup> (T.C.)

65 **Andante** ♩ = 58 ca.

**G**



75

**H**



80



85 **I Allegretto risoluto** ♩ = 120 ca.

**I**



91

unis.

**J**



98

**K** div.



104

unis.

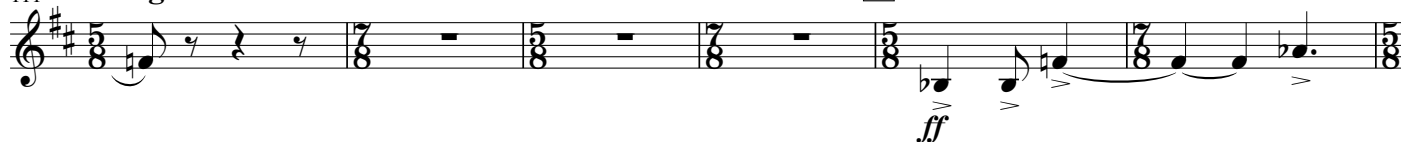


108



111 **Allegro marcato** ♩ = 176 ca.

**L**



117



123

**M**



Euphonium in B<sup>b</sup> (T.C.)

129 N

135 O

141 P *div.*

147 *unis.* Q *div.*

153 P *poco riten.*

161 Q *a tempo*

167 *f*

173 R

179

185 S **Animato**  $\text{♩} = 126 \text{ ca. rit.}$

Euphonium in B<sup>b</sup> (T.C.)

193 **T** Allegretto ♩=120 ca. **U** **V** unis.

8 7 *mp* *f*

211

216 **W**

*ff* *mf*

**X** 227

232

237 **Y**

*ff*

241

*mf*

247 *rit.* **Z** Andante ♩=88 ca. *poco accel.*

*pp*

254 **Maestoso** ♩=100 ca.

*fp* *ff*

-4-