

Tuba in E^b (B. C.)

スピリティッド・アウェイ

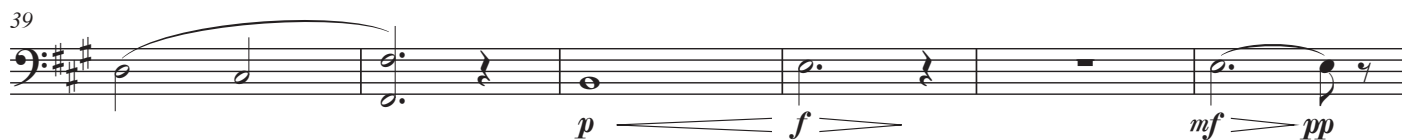
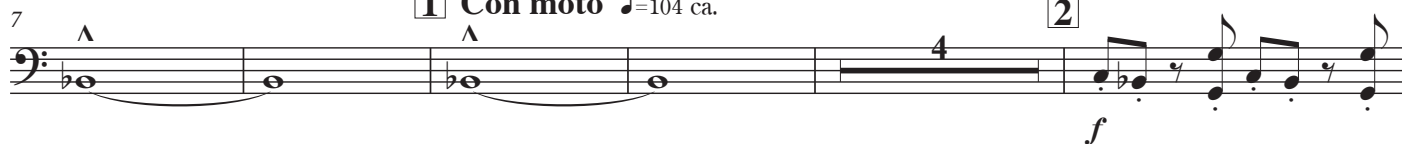
《千と千尋の神隠し》より
Spirited Away

J. Hisaishi & Y. Kimura
arranged by Kazuhiro Morita

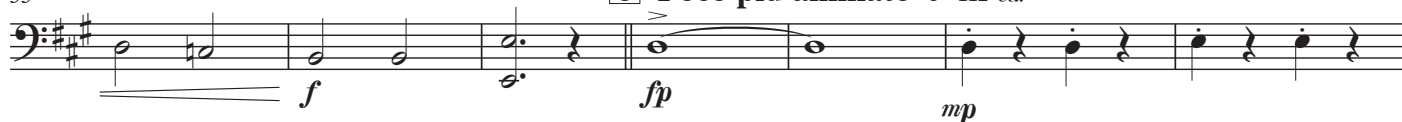
Poco pesante ♩=80 ca.



1 Con moto ♩=104 ca.



6 Poco più animato ♩=112 ca.



Tuba in E^b (B. C.)

60



66



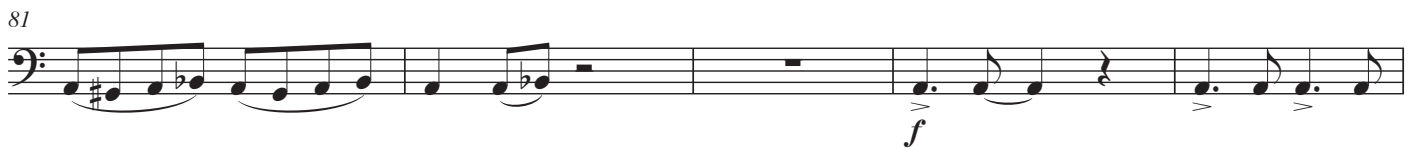
71



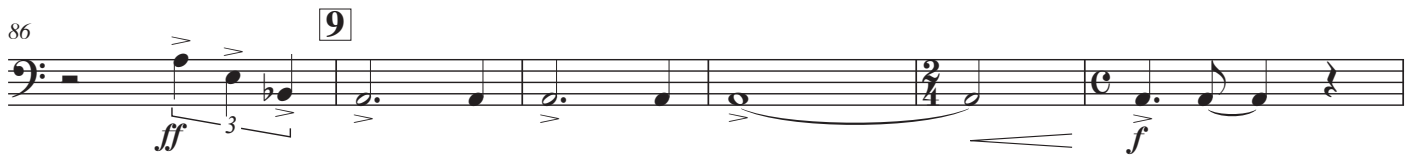
76



81



86



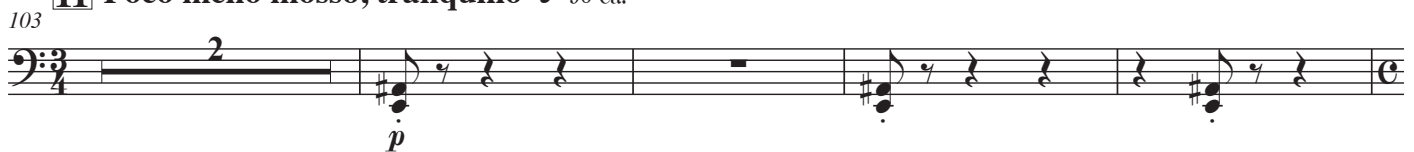
92



97 **10 Marcato** ♩=104 ca.



103 **11 Poco meno mosso, tranquillo** ♩=96 ca.



109 **12**



Tuba in E^b (B. C.)

115

mf

f

121 **13**

f *ff*

127

14 **Piacere** $\text{♩.} = 44 \text{ ca.}$ **15**

sfp *ff*

「いつも何度でも」 © 2001 by Studio Ghibli

167 **16** **Moderato** ♩=88 ca.

8

mf

180

17 Poco più allegro

The image shows a musical score for a single measure, numbered 17. The tempo is 'Poco più allegro'. The key signature has two sharps (F# and C#). The measure begins with a bass clef and a common time signature. The melody consists of a half note F#4, a quarter note G#4, a half note A4, a quarter note B4, a half note C5, and a quarter note B4. There is a fermata over the half note A4. The measure ends with a double bar line. The dynamics are marked 'ff' (fortissimo) at the beginning of the measure.

[illegible][illegible]

198

19

f

204

f *mp* *pp*

Tuba in E^b (B. C.)

210 **20** *poco stringendo* **21** **Più mosso ancora**

218

224 **22** *allargando*

230 **Retenuto**

スピリティッド・アウェイ

《千と千尋の神隠し》より

Spirited Away

alternative opening

Allegretto ♩=112 ca.

A

13

19 **B**

24

28

32 *sfz* **to 3**