

Bass Trombone in B \flat
(Bass Clef) (option)

吹奏楽のための二つの断章 “海神”

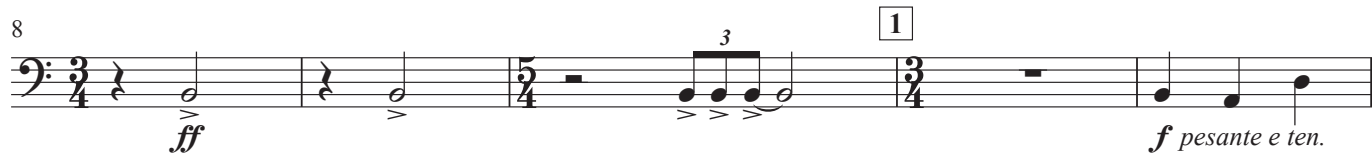
Two fragments for wind orchestra

“KAIJIN”

和田 薫
Kaoru Wada

$\text{♩} = 56 \text{ ca.}$ **Maestoso**

I



18 [2] Pesante



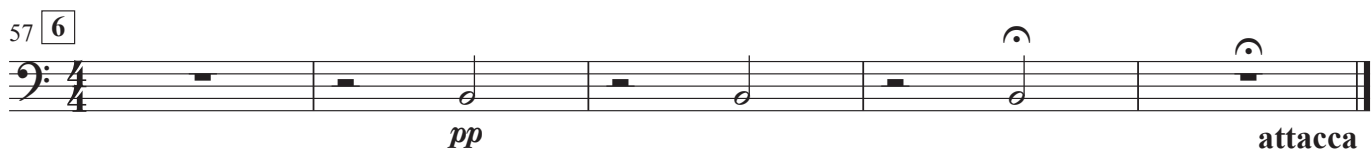
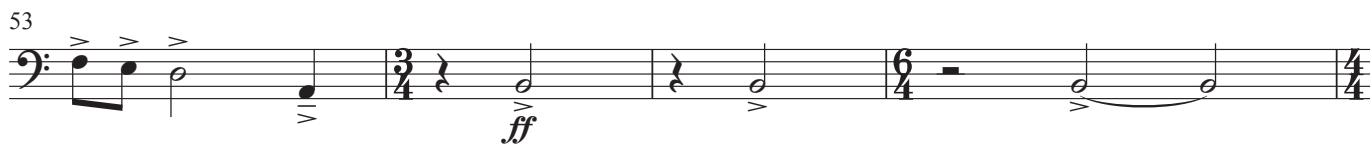
28 [3] Tranquillo



46 [5] Maestoso

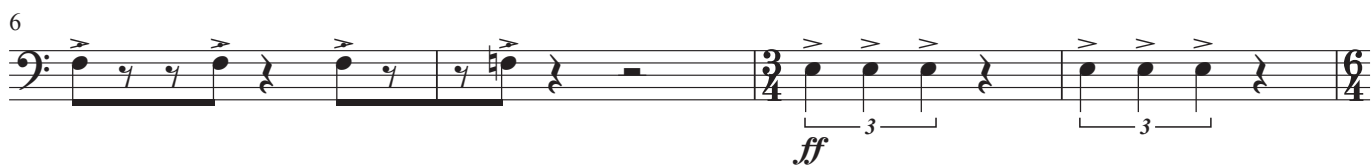
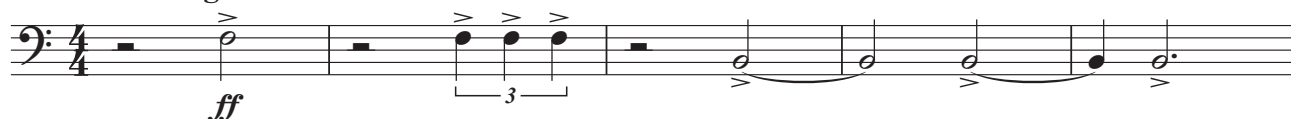


Bass Trombone in B \flat (B.C.) (option)



$\text{♩} = 126$ Allegro barbaro

II



Bass Trombone in B \flat (B.C.) (option)

39 4

ff *ff* 3

45 *ff* 3 3 3

50 5 *ff*

55 6 *mf*

60

64

68 7

72 8 *ff* 7

83 9 *mp* 2 *p*

89 *poco a poco cresc.*

93 10 *ff* 3

Bass Trombone in B^b (B.C.) (option)

97

97

102

ff

105 11

f *mf*

109

f

114 12

The musical score for Example 12, measures 114-117, is written in bass clef with a 4/4 time signature. The melody consists of eighth-note patterns. In measure 114, the melody starts with a half rest, followed by an eighth-note G4, eighth-note F4, eighth-note E4, eighth-note D4, and an eighth-note C4. The dynamic marking *mf* is placed below the first measure. Measures 115, 116, and 117 continue the same melodic pattern. The score is presented on a single staff.

118



122 13

ff

[illegible]

132

14

p

poco a poco cresc.

136

139