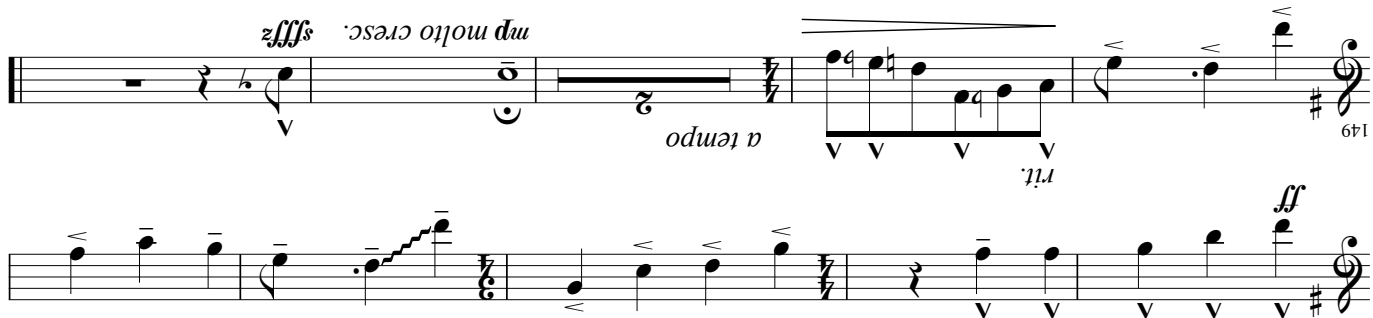
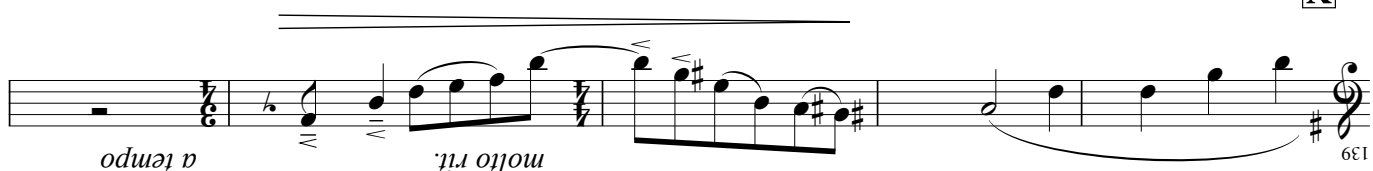
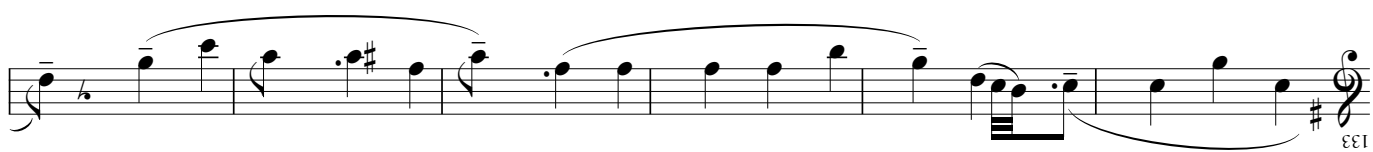
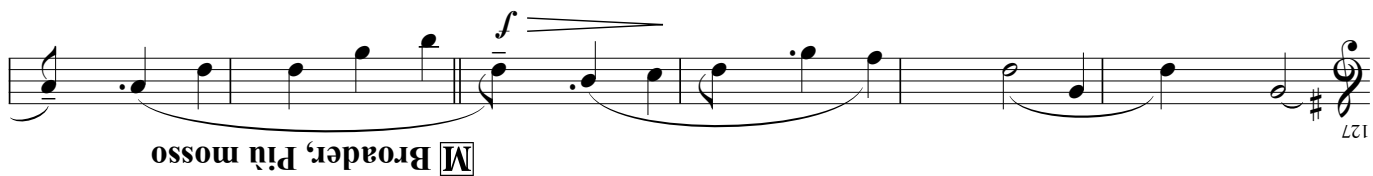
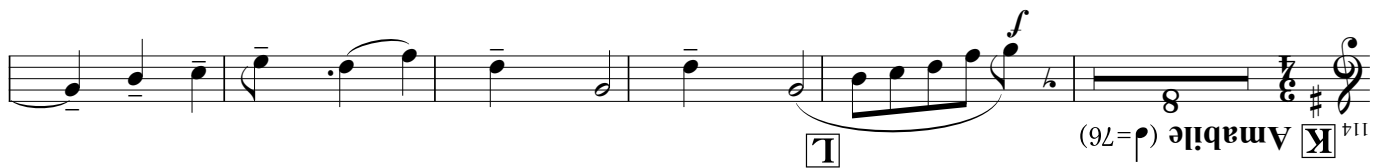
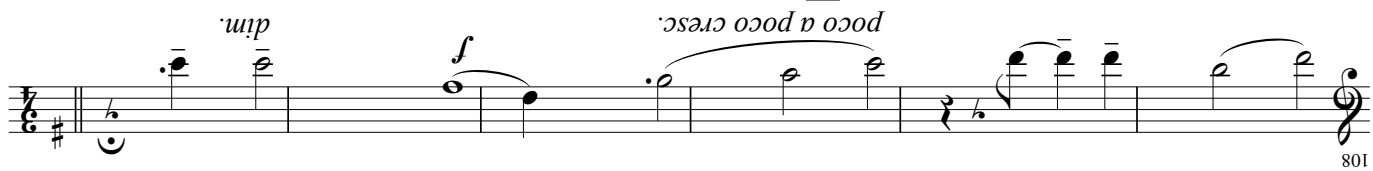
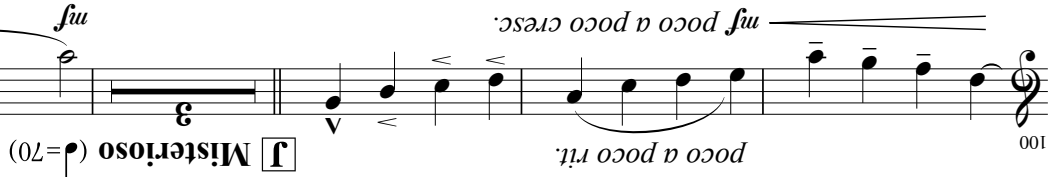


H Allegro con spirito ($\text{♩}=136-140$)

NEVERLAND

Adventure tale of

Daisuke Shimizu (2015)

Lento misterioso ($\text{♩}=60-66$) *poco rit.*

Measures 1-8 of the score for 'Lento misterioso'. The music is in 4/4 time, key of E-flat major. It features a slow, mysterious melody with a crescendo leading to a forte dynamic.

A Amabile ($\text{♩}=70-76$) *mf*

Measures 9-21 of the score for 'Amabile'. The music is in 4/4 time, key of E-flat major. It features a more lively melody with a mezzo-forte dynamic.

C Broader, Più mosso *f*

Measures 22-32 of the score for 'Broader, Più mosso'. The music is in 4/4 time, key of E-flat major. It features a broader, more moving melody with a forte dynamic.

Measures 33-37 of the score for 'D a tempo'. The music is in 4/4 time, key of E-flat major. It features a tempo change to 'a tempo' and a more rhythmic melody.

D a tempo *rit.*

Measures 38-53 of the score for 'D a tempo'. The music is in 4/4 time, key of E-flat major. It features a tempo change to 'a tempo' and a more rhythmic melody.

E Allegro con spirito ($\text{♩}=136-140$) *mf*

Measures 54-75 of the score for 'Allegro con spirito'. The music is in 4/4 time, key of E-flat major. It features a lively, spirited melody with a mezzo-forte dynamic.

F Con fuoco ($\text{♩}=86$) *rit.* *sfz*

Measures 76-95 of the score for 'Con fuoco'. The music is in 4/4 time, key of E-flat major. It features a fiery, passionate melody with a fortissimo dynamic.

G *ff* *poco a poco cresc.*

Measures 96-105 of the score for 'G'. The music is in 4/4 time, key of E-flat major. It features a crescendo leading to a fortissimo dynamic.

Espressivo ($\text{♩}=96$) *rit.* *f* *poco a poco cresc.*

Measures 106-115 of the score for 'Espressivo'. The music is in 4/4 time, key of E-flat major. It features an expressive melody with a forte dynamic and a crescendo.

poco a poco accel. *mf* *poco a poco cresc.* *ff*

Measures 116-125 of the score. The music is in 4/4 time, key of E-flat major. It features a crescendo leading to a fortissimo dynamic.