

2nd Alto Saxophone in E \flat

3 Romances Op. 94

I.

Robert Schumann
arr. by Masaki ItaniNicht Schnell $\text{♩} = 100$

11 **1** p mf p

18 **2** p *cresc.* mf mp

23 **3** p mf p *cresc.*

32 **4** f

38 **5** sf mp *cresc.* f

44 f sf p 3 3

50 **6** **7** f mp

62 **8** p p

69 mf (sub.) *poco a poco dim...*

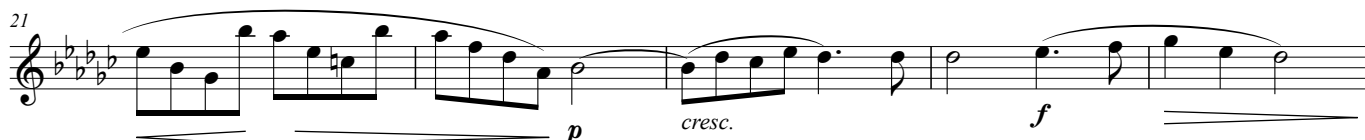
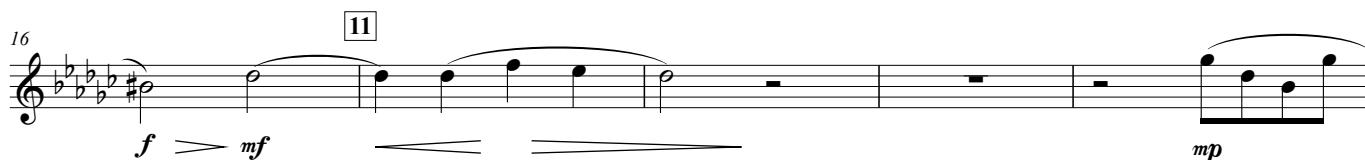
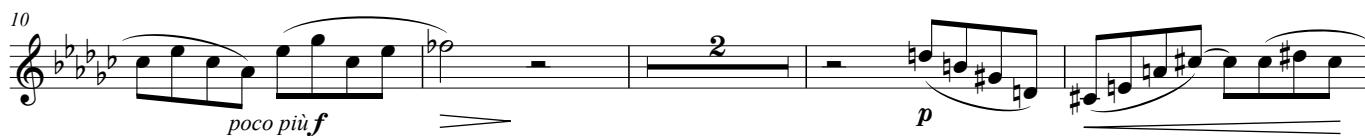
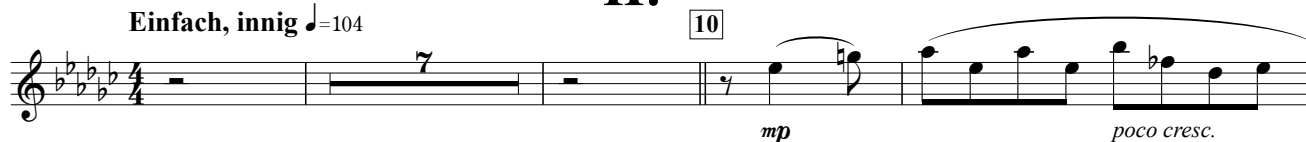
75 **9** p

81 f pp

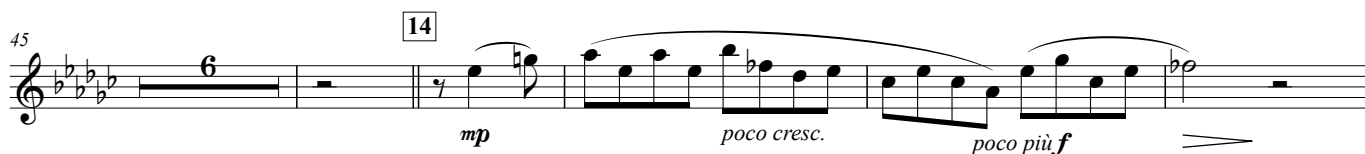
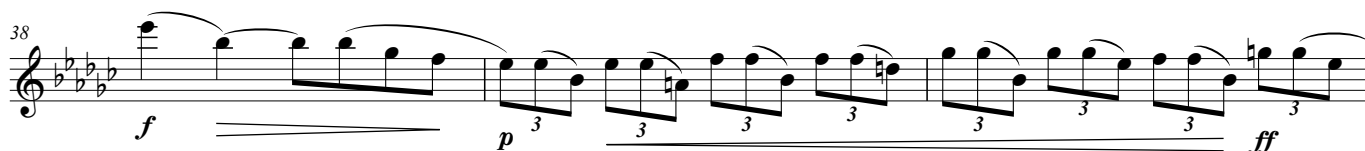
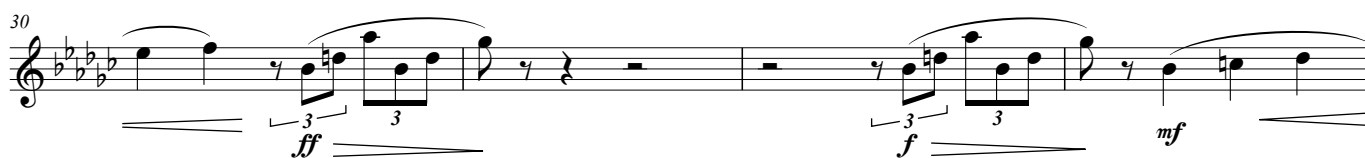
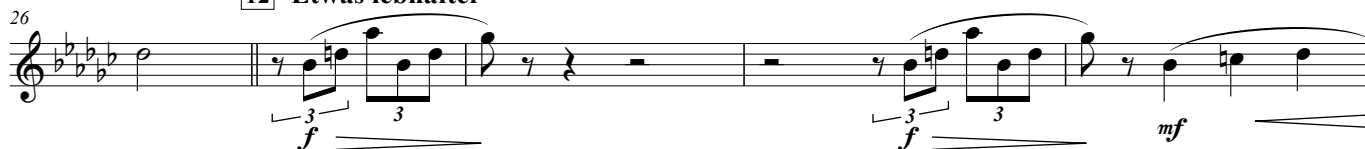
II.

Einfach, innig $\text{♩}=104$

10



12 Etwas lebhafter



2nd Alto Saxophone in E^b

55 15

p *f* *mf*

61 *mp* *p*

66 16

cresc. *f*

71 *p* *mp* *f* *mp*

76 *poco rit...* 17 (meno mosso)

p *pp*

III.

Nicht Schnell ♩=100

p *rit.* *a tempo* *rit.* *a tempo* *mf*

5 *poco rit...* 18 *a tempo*
(più vivo)

f

9 *p* *mf* *p*

13 *poco riten.* 19 *a tempo*

cresc. *mf* *f* *mf* *p*

17 *rit.* *a tempo* *poco rit...*

mf

20 *a tempo* *rit...*

f

2nd Alto Saxophone in E^b

25 **21** *a tempo*

p dolce

[illegible]

39

cresc.


23

f

mf

43 *poco rit...* *a tempo* *rit.* *a tempo*

47 *rit.* *a tempo* *poco rit...* *a tempo* (più vivo) **24** *f*

51 

55 *p* *cresc.* *mf* *f* *mf* *p* *poco riten.* **25** *a tempo*

59 *rit.* *a tempo* *rit.* *a tempo* *poco rit...*

63 26 *a tempo*

f *rit...*

67 **Coda**
(meno mosso)

27

pp

Detailed description: This image shows the musical score for the Coda section, measures 67-72. The key signature is three sharps (F#, C#, G#). The tempo/mood is marked 'Coda (meno mosso)'. The score begins with a treble clef and a key signature of three sharps. Measure 67 contains a series of eighth and quarter notes. Measure 68 is a whole rest. Measure 69 is a half rest. Measure 70 contains a quarter note, a half note, and a quarter note. Measure 71 contains a quarter note, a half note, and a quarter note. Measure 72 is a whole rest. The score ends with a double bar line. The dynamic marking 'pp' is placed below the staff. The measure number '27' is enclosed in a box at the end of the line.