

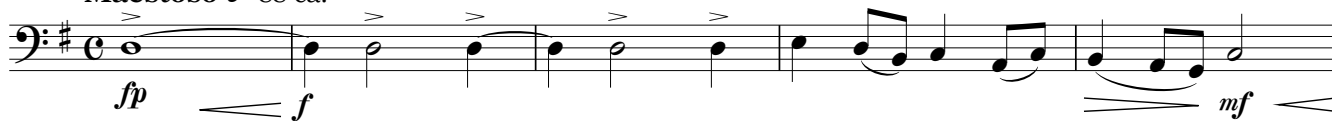
Tuba in E<sup>b</sup>  
(Bass Clef)

# Classical Delights

arr.by Makoto Onodera

[La grande porte de KIEV "Tableaux d'une exposition"] M.Mussorgsky

**Maestoso** ♩=88 ca.



[Aragonaise "Carmen"] G.Bizet



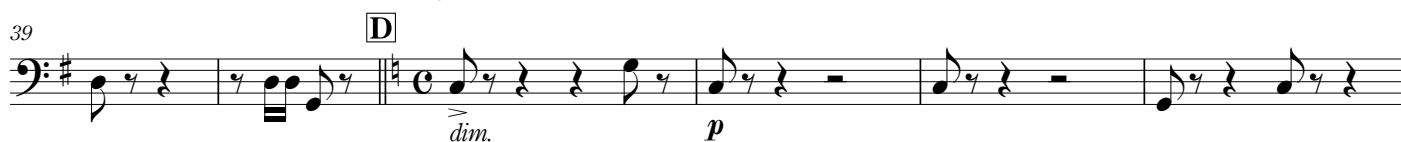
15 [B] ♩ = ♩ (♩=126 ca.)



[Les Toréadors "Carmen"] G.Bizet



[Triumphal March "Aida"] G.Verdi



[Les Toréadors "Carmen"] G.Bizet



# Tuba in E<sup>b</sup> (Bass Clef)

[Scène "The Swan Lake"] P.Tchaikovsky

75 **G** St.Bass

*ff* *mp* *cresc.*

81

*mp cresc.*

[Ungarischer Tanz Nr.5] J.Brahms

88 **H**

*mf*

95

*p*

[Rapsodie sur un thème de Paganini - Tema] S.Rachmaninoff

[Turkish March] L.v.Beethoven

104 **I** **J**

*ff* *mp* *p*

125

*cresc.* *mf* *cresc.*

[Turkish March] W.A.Mozart

134 **K**

*f* *ff*

[Leichte Kavallerie Overture] F.Suppé

143 **L**

*p*

150

158 **M**

*ff*

[L'apprenti Sorcier] P.Dukas

166 **N**

*mp* *mf*

# Tuba in E<sup>b</sup> (Bass Clef)

[Montagues and Capulets "Romeo and Juliet" S.Prokofiev

173



179



[Night on the Bare Mountain] M.Mussorgsky

184



[Symphonie No.9 - 2 mov.] A.Dvorak

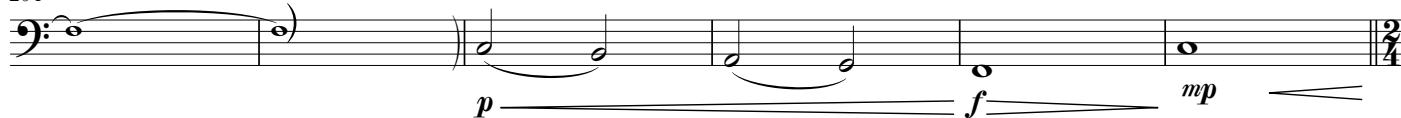
190



196



204



[Pomp and Circumstance] E.Elgar

210



218



227



236



243

