

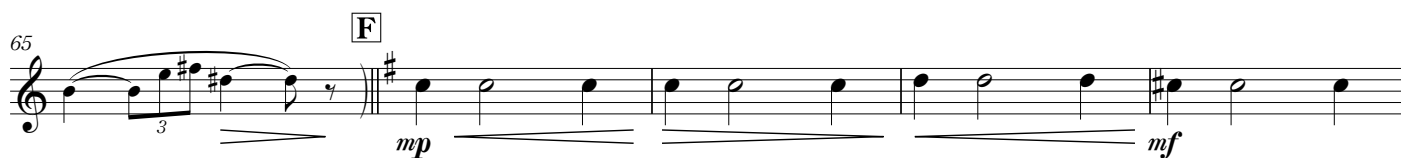
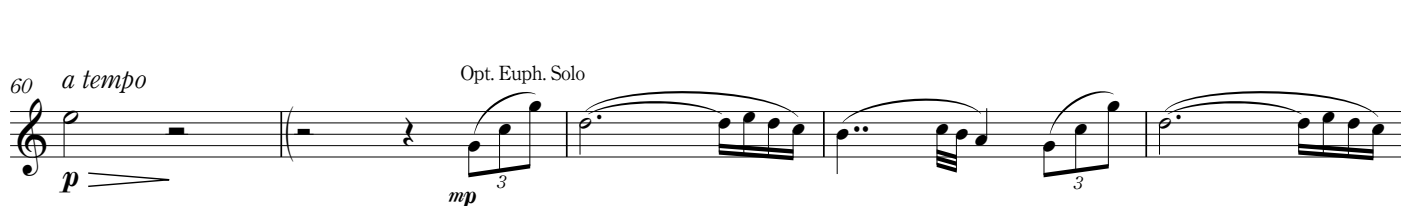
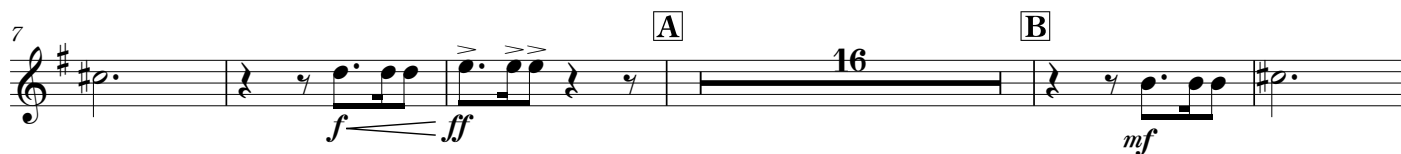
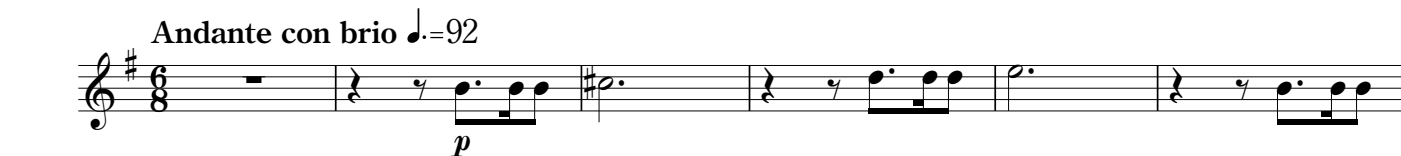
1st Trombone in B \flat
(Treble Clef)

海へ... 吹奏楽の為に(小編成版)

Toward the Sea... for Wind Orchestra

Kei Misawa

Andante con brio $\text{♩} = 92$



1st Trombone in B^b (Treble Clef)

70 *poco rit.* **G** *a tempo*

mf

79 **H**

poco cresc. *f*

86 *poco rit.* **I** **J**

mp *cresc.* *mf*

103 **K** *Tempo I* ♩=92

f *ff* *p*

110 **L** **M**

f *ff* *mf*

132 **N**

f

140 *molto rit.* **O** *Grandioso* ♩=60

ff

147 *allarg.* **P** *Molto agitato* ♩=100

f *ff*

153

ff *sfz* *ff*