

Bb Trombone 1st  
(Bass Clef)

and all on the earth had gone

Music by Akira Toda  
August 22,1998

"DEVELOPMENT"

Allegro ♩=132

3 10 14 9

1

23

23

*ff*

33

31

43

38

*ff*

45

56

4

4

64

2

52

71

2

66

*f*

*mp*

*f*

79

74

87

81

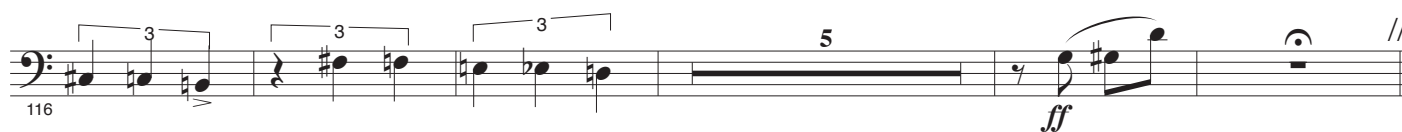
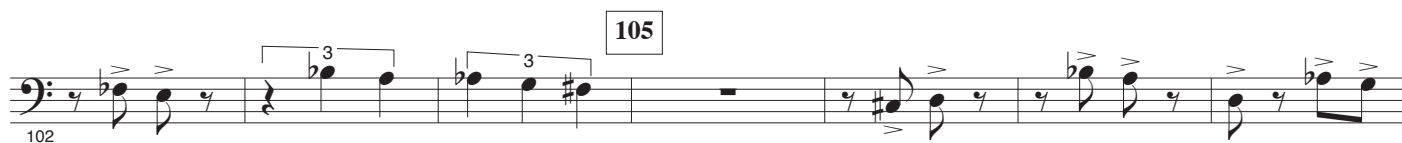
*f*

95

2

88

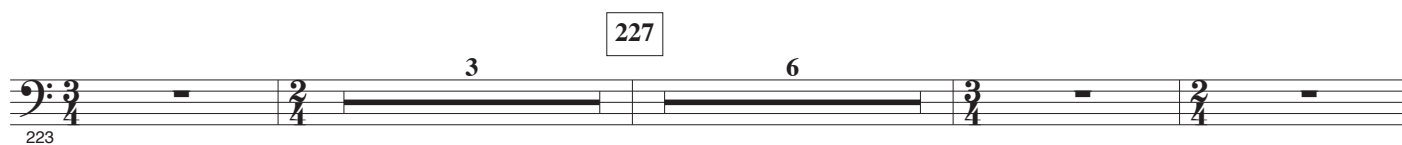
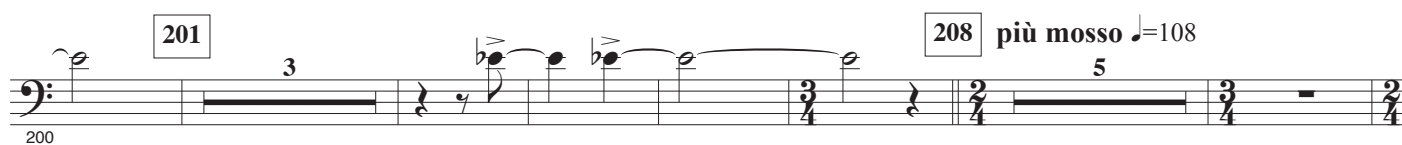
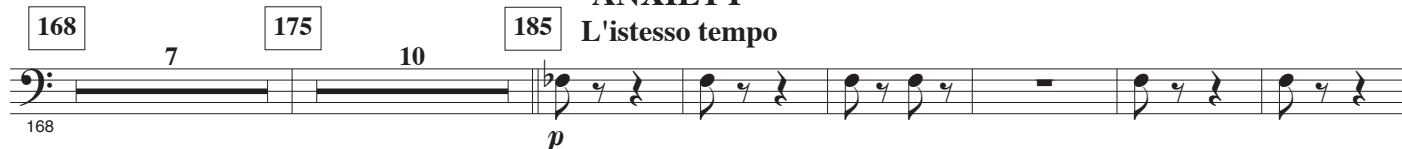
Bb Trombone 1st (Bass Clef)



"SORROW"



"ANXIETY"



Bb Trombone 1st (Bass Clef)

235 *mf*

243 **L'istesso tempo** *p*

251 *mf* muted 258 5

265 *mf* open

273 **"DISCORDANCE"** *ff* 281 4 *ff*

282 *mp* 289 *mf*

290 *ff* 297 *ff*

298

**"BATTLE and DESTRUCTION"**  
304 **L'istesso tempo** *ff* *glissando*

314

316

Bb Trombone 1st (Bass Clef)

322

328

335

*ff*

341

349

352

GP

356

2

GP

*ff*

363

"AND ALL ON THE EARTH HAD GONE"

Andante ♩=72

*ff*

373

385

389

*rit.*

//

*pp*