

Tuba in B^b
(B. C.)

Three Preludes

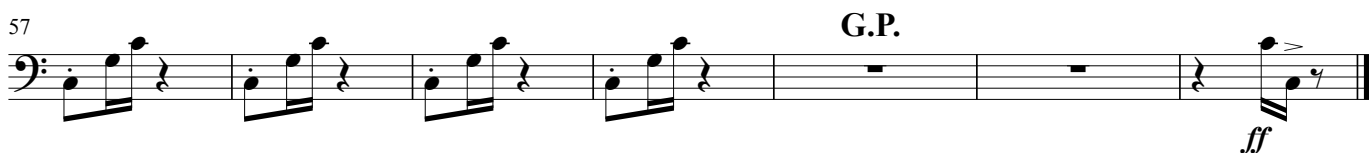
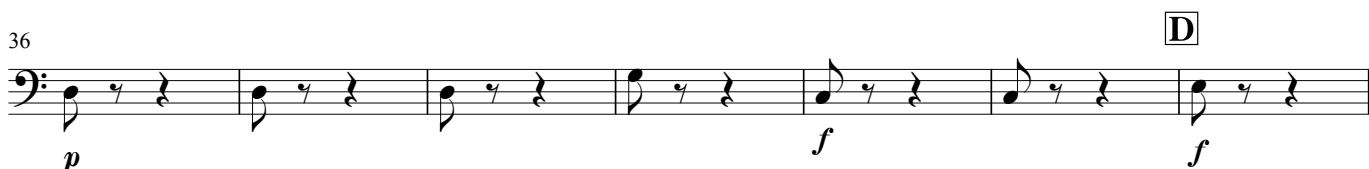
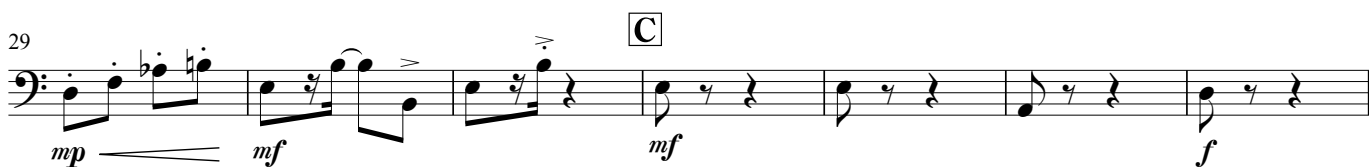
for Wind Ensemble

I

Music by George Gershwin
arr. by Yukiko Nishimura (2008)

Allegro ben ritmato e deciso ♩ = 90

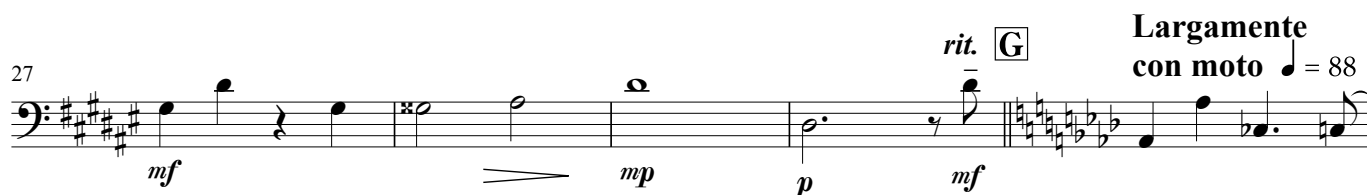
A



Tuba in B \flat (B. C.)

II

Andante con moto e poco rubato $\text{♩} = 75$

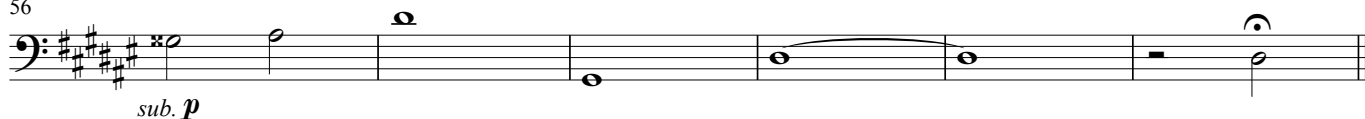


Tuba in B^b (B. C.)

50



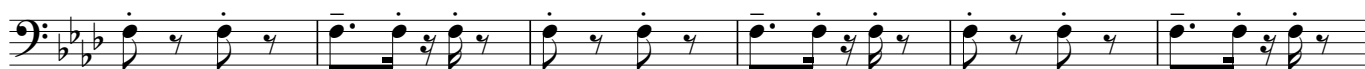
56



Allegro ben ritmato e deciso ♩ = 100 **III** *meno* **I** *a tempo*



7



13 **J**



19

K *a tempo*



25

L



35

M

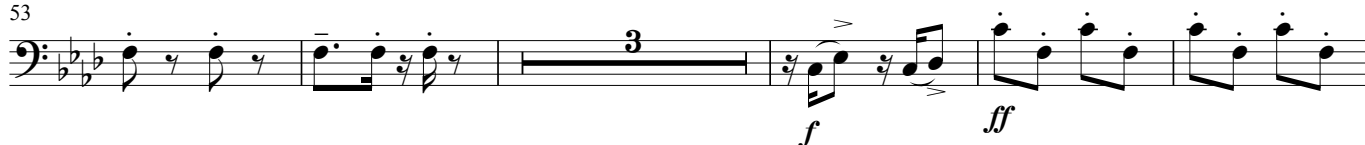


45 **N**

O



53



61

