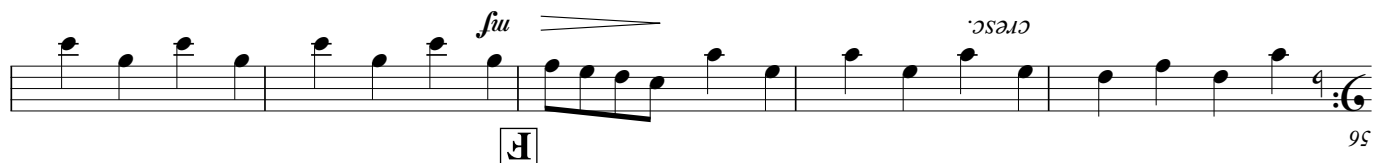


Bass Tuba in B<sup>b</sup>



51



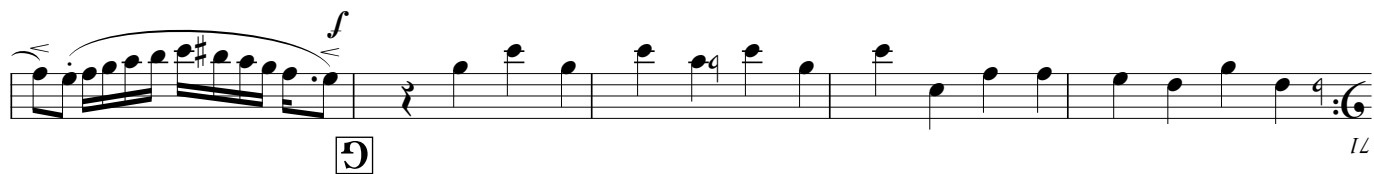
56



66



76



86



96



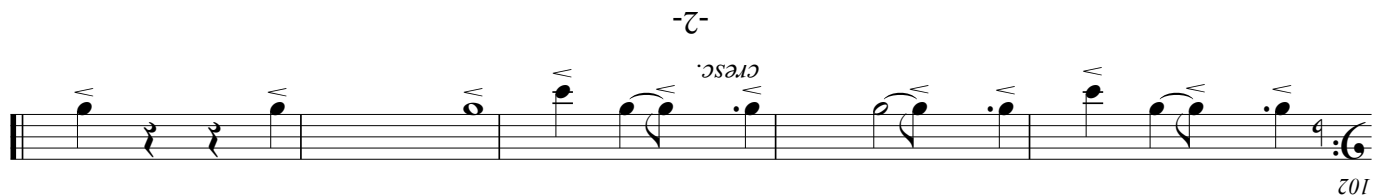
106



116



126



136

**Allegro con brio** = 126~132

The image displays a musical score for the song "The Rose Tree". It consists of three staves of music, each with a key signature of one flat (B-flat) and a 6/8 time signature. The first staff begins with a treble clef and a key signature change to one flat. The second staff begins with a bass clef and a key signature change to one flat. The third staff begins with a treble clef and a key signature change to one flat. The score includes various musical notations such as notes, rests, and dynamic markings. The first staff has a "cresc." marking. The second staff has "mf" and "f stacc." markings. The third staff has "ff" and "f" markings. The score is divided into three measures, each ending with a double bar line and a repeat sign. The first measure is labeled "1", the second "2", and the third "3".

The image displays a musical score for the song "The Rose Tree". It consists of two staves of music. The top staff begins with a treble clef and a key signature of one sharp (F#). The melody starts with a quarter note G4, followed by a dotted quarter note A4, and then a triplet of eighth notes (B4, C5, B4). The music continues with various note values and rests, including a section marked with a forte (*ff*) dynamic. The bottom staff begins with a bass clef and a key signature of one sharp (F#). The melody starts with a quarter note G3, followed by a dotted quarter note A3, and then a triplet of eighth notes (B3, C4, B3). The music continues with various note values and rests, including a section marked with a forte (*ff*) dynamic. The score concludes with a double bar line and a repeat sign. The page number "26" is visible in the bottom right corner.

37

37

*ff* *stacc.* *dim.* *p* *fp* *f* *ff* *stacc.*

**Trio**

41

© Copyright 2009 by Hiroshima Prefecture of All Japan Band Association. All rights reserved.