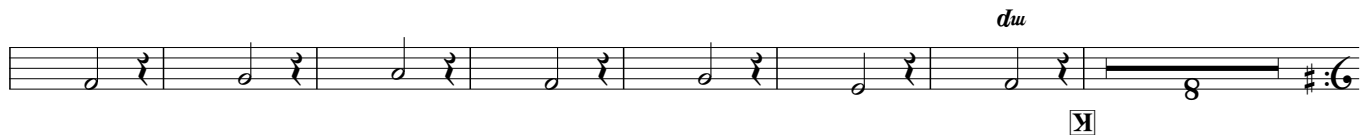
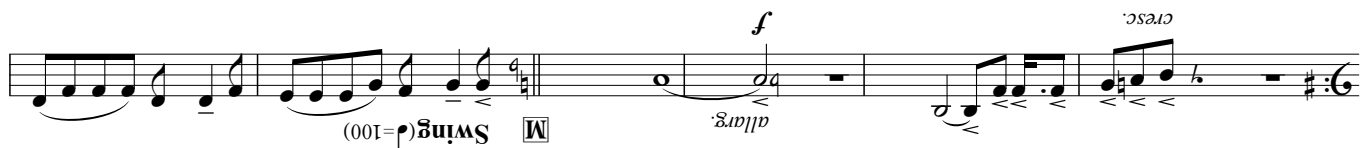
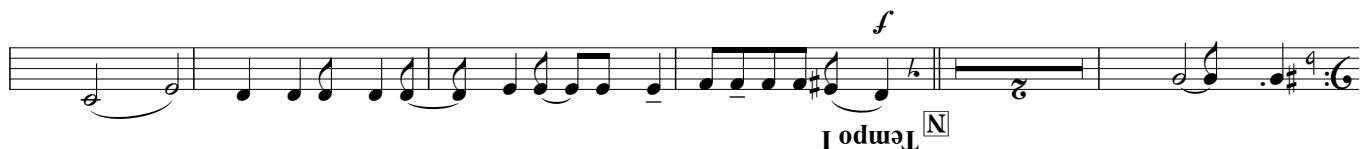




[O]



Medium Fast (●=144)

musical score for "The Rose Tree" by Robert Schumann, Op. 15, No. 2. The score is in 6/8 time and consists of 11 staves. It features a piano introduction, a main melody, and a piano accompaniment. The melody is marked with dynamics like "f" (forte) and "ff" (fortissimo), and includes a "cresc." (crescendo) marking. The piano part includes a "gliss." (glissando) marking. The score is divided into sections labeled A, B, C, D, E, F, G, and H. The key signature is one sharp (F#) and the time signature is 6/8.