


# L'isle Joyeuse

music by Claude Debussy  
arr. by Toshio Mashima

**Quasi una Cadenza** ♩ = 88 ca.



**7** **Tempo: Modéré et très souple**

St.mute

*pp*

**3**

**2**

Retenu

The musical score for the 7th measure is written on a single staff. It begins with a whole rest. This is followed by a half note G4, which is slurred to a half note F#4. After this, there is a quarter rest, then a whole rest. The next part of the measure consists of a triplet of eighth notes G4-A4-B4, followed by a dyad of eighth notes G4-A4, and finally a whole rest. The first note (G4) is marked with the dynamic *pp*. Above the staff, the tempo is indicated as 'Modéré et très souple'. Above the first note, 'St.mute' is written. Above the triplet, the number '3' is written. Above the dyad, the number '2' is written. Above the final whole rest, the word 'Retenu' is written.

15 Tempo

25 Open

4

6

*mf* <

*mf* <

Example 1

28  $\text{♪} = \text{♪}$  52

24

$f$

64 *poco rit.* 67 **Un peu cédé. Molto rubato** *poco riten.*

*a tempo* 99 **a Tempo**

A musical staff with a treble clef and a single sharp (F#) indicating the key of D major. The staff contains a single measure with a whole rest, which is labeled with the number '99' above it. The tempo marking 'a tempo' is written above the staff, and 'a Tempo' is written below the staff.

[illegible]

115

Open

26

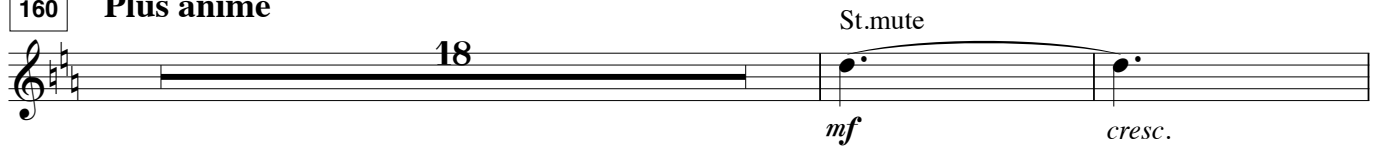
*f*

*f*

145

*f* *sfz*

160

**Plus animé**

St.mute

*mf**cresc.*

182

186



Open

*p**p**f**f**f*

3

3

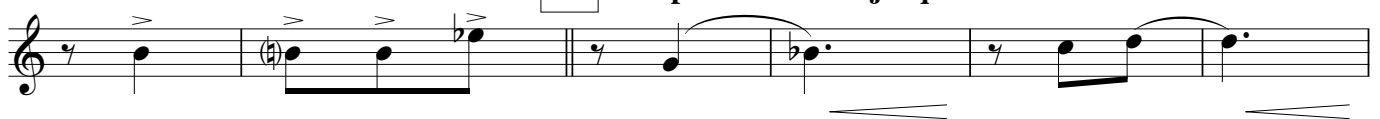
3

3

220

**Un peu cédé***ff*

244

**Tempo: très animé jusqu'à la fin.***sfz*