

Tuba in E^b
(Bass Clef)

Funiculi-Funicula Rhapsody

for Small Concert Band

Luigi Denza
arr. by Yo Goto (2010)

Maestoso ♩=72

ff

ff

ff

ff

10 **Allegro brillante** ♩=144 **A**

cresc. **fff** **pp**

18 **11** *p cresc.* *f cresc.* **ff**

37 **B** *mf*

44

51

58 **C** *p*

65 *mp*

72 **D** *f*

Tuba in E^b (Bass Clef)

79



85



91



97



104



111



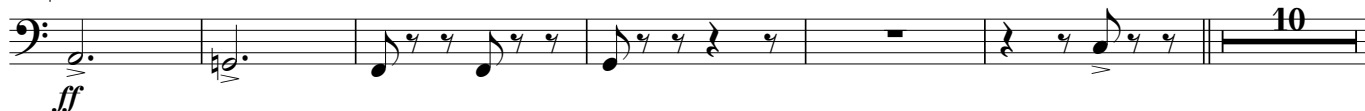
134



141



148 2.



Tuba in E^b (Bass Clef)

164 **I** solo

 4
pp *p*

176 tutti
p *cresc.*

182 **J**
mf

190
div.

200 **K**
f

210 unis. *rit.* **L** ♩. = 72
dim. *p*

223 **M**
mp *f*

229 *rit.*
mf *mp* *p*

236 **N** ♩. = 72 solo
p

243
mp

250 **O** ♩. = 144 G.P.
mp

Tuba in E^b (Bass Clef)

266 **P** solo $\text{♩} = 72$
 p

274
 mp

282 tutti **Q**
 p *cresc.* f

291 *rit.* - - - - -
 fp *cresc.* f

299 $\text{♩} = 144$ ($\text{♩} = \text{♩}$) **R**
 ff ff

305
 p *cresc.*

312
 ff

S Più mosso $\text{♩} = 168$
 319 div.

329 **T** unis.
 $cresc.$

336
 fff

343 $\text{♩} = 72$ $\text{♩} = 168$
 pp *cresc. molto* fff