

Scènes de Ballet

Alexander Glazunov

arr.by Makoto Onodera

I. Prélude

Allegro ♩ = 144 ca.

Measures 1-13 of the Prélude. The music is in 12/8 time, key of B-flat major. It begins with a forte (f) dynamic and features a series of eighth and sixteenth notes, some with accents. Measure 13 ends with a double bar line and a repeat sign.

A ♩ = 80 ca.

Section A, measures 14-20. The time signature changes to 2/2. The music consists of half notes and whole notes, with dynamics ranging from f to fp. Measure 20 ends with a double bar line.

B Alla breve

Section B, measures 21-29. The time signature changes to 2/4. The music is more rhythmic, featuring eighth and sixteenth notes. Dynamics include f, mf, ff, and f. Measure 29 ends with a double bar line.

C

Section C, measures 30-33. The music continues with eighth and sixteenth notes. Dynamics include ff and f. Measure 33 ends with a double bar line and a key signature change to B-flat major.

II. Marionnettes

D Allegro ♩ = 60-66 ca.

Section D, measures 34-38. The time signature changes to 3/8. The music features a series of eighth notes. Dynamics include sfz and p. Measure 38 ends with a double bar line.

F

Section F, measures 59-64. The music continues with eighth notes. Dynamics include p. Measure 64 ends with a double bar line.

G

Section G, measures 65-70. The music continues with eighth notes. Dynamics include p. Measure 70 ends with a double bar line.

E♭ Horn 1

83 **H**

6

p

p

94 *(poco rit.)* **I** *(a tempo)*

6

p

107

3

p

V. Pas d'Action

Adagio ♩ = 56-60 ca.

115

3

mp

mp dolce

121

mf

J

p

126

f

K

p

f

L **animando poco a poco**

132

p espress.

poco

mp cresc.

M **piu mosso** ♩ = 63 ca.

136

f

calando

dim.

N **poco meno mosso** ♩ = 52-56 ca.

142

mp

2

mp

dim.

p

O

148

mf

p dim.

pp

rit.

p

E♭ Horn 1

VIII. Polonaise

Moderato ♩ = 104-108 ca.

154 *mf* *mp*

158 *mf*

163 **P** *f* *p* *cresc.*

168 **Q** *f* *p* *f* *p*

172 *fp* *cresc.* *f* *mp* *cresc.* *rit.* *sfz*

R a tempo

177 *f* *mf* *sfz*

181 *f* *mf* *p* *cresc.* *f*

S

185 *f* *mf* *3* *3* *3*

189 *f* *mf* *3* *3* *mf*

T

193 *ff* *mf* *sfz*

E♭ Horn 1



U



V



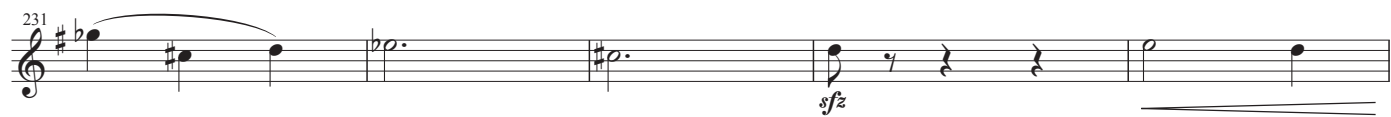
W



X



Y *piu mosso* ♩ = 112 ca.



Z *Allegretto* ♩ = 120 ca.

