

Bass (Tuba) in Bb  
(T. C.)

# Strike Up The Band

George Gershwin  
arr. by Teruaki Matsushiro

Tempo di Marcia ♩=124



**A**



**B** tutti



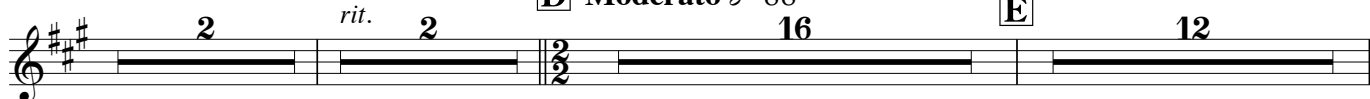
**C** A Little Broader ♩=80



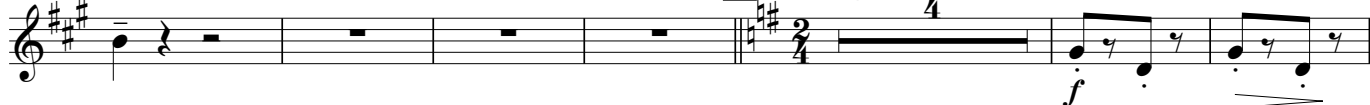
Poco più mosso ♩=100



**D** Moderato ♩=88



rit. accel. **F** Allegro



Musical score for Bass (Tuba) in Bb (T. C.). The score consists of 11 staves of music. The first staff begins with a treble clef, a key signature of one sharp (F#), and a 2/4 time signature. The music starts with a half note G4, followed by a quarter rest, then a quarter note A4 with an accent (^). The dynamic is *mf*. The second staff continues the melody, ending with a double bar line and a key signature change to two sharps (F# and C#).  
 The third staff is marked **[G] Allegro con moto** with a tempo of 112. It begins with a treble clef, a key signature of two sharps (F# and C#), and a 4/4 time signature. The music starts with a half note G4, followed by a quarter rest, then a quarter note A4 with an accent (^). The dynamic is *sf*. The fourth staff continues the melody, ending with a double bar line and a key signature change to one sharp (F#).  
 The fifth staff is marked **[H]** and begins with a treble clef, a key signature of one sharp (F#), and a 6/8 time signature. The music starts with a half note G4, followed by a quarter rest, then a quarter note A4 with an accent (^). The dynamic is *cresc.*. The sixth staff continues the melody, ending with a double bar line and a key signature change to one sharp (F#).  
 The seventh staff is marked **[I] Non Fast** with a tempo of 88. It begins with a treble clef, a key signature of one sharp (F#), and a 4/4 time signature. The music starts with a half note G4, followed by a quarter rest, then a quarter note A4 with an accent (^). The dynamic is *mf*. The eighth staff continues the melody, ending with a double bar line and a key signature change to one sharp (F#).  
 The ninth staff is marked **[J] a tempo** and begins with a treble clef, a key signature of one sharp (F#), and a 4/4 time signature. The music starts with a half note G4, followed by a quarter rest, then a quarter note A4 with an accent (^). The dynamic is *mp*. The tenth staff continues the melody, ending with a double bar line and a key signature change to one sharp (F#).  
 The eleventh staff is marked **[K] Allegretto giocoso** with a tempo of 132. It begins with a treble clef, a key signature of one sharp (F#), and a 4/4 time signature. The music starts with a half note G4, followed by a quarter rest, then a quarter note A4 with an accent (^). The dynamic is *sf*. The twelfth staff continues the melody, ending with a double bar line and a key signature change to one sharp (F#).  
 The thirteenth staff is marked **[L] Tempo di Marcia** and begins with a treble clef, a key signature of one sharp (F#), and a 4/4 time signature. The music starts with a half note G4, followed by a quarter rest, then a quarter note A4 with an accent (^). The dynamic is *mf*. The fourteenth staff continues the melody, ending with a double bar line and a key signature change to one sharp (F#).  
 The fifteenth staff is marked **[M] Grandioso** and begins with a treble clef, a key signature of one sharp (F#), and a 4/4 time signature. The music starts with a half note G4, followed by a quarter rest, then a quarter note A4 with an accent (^). The dynamic is *f*. The sixteenth staff continues the melody, ending with a double bar line and a key signature change to one sharp (F#).  
 The seventeenth staff is marked **[N]** and begins with a treble clef, a key signature of one sharp (F#), and a 4/4 time signature. The music starts with a half note G4, followed by a quarter rest, then a quarter note A4 with an accent (^). The dynamic is *ff*. The eighteenth staff continues the melody, ending with a double bar line and a key signature change to one sharp (F#).