

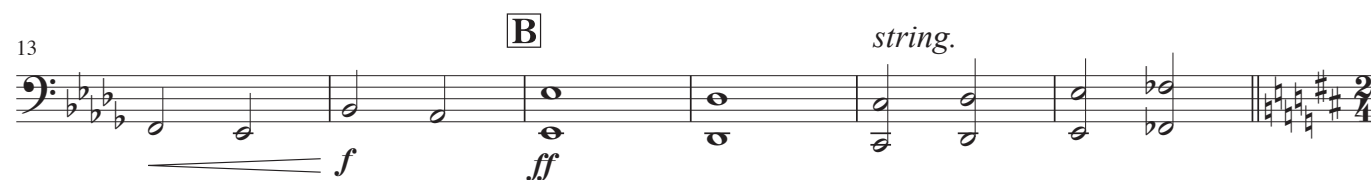
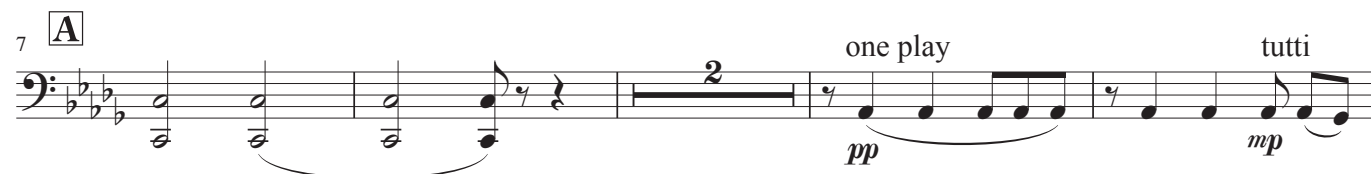
Tuba in B \flat
(Bass Clef)

Fedora

I. Prelude (from Act I)

Umberto Giordano
Arr. by Eiji Suzuki

Andante mosso $\text{♩} = 60$



68 *tratt.* *a tempo* *one play* *tutti div.*

pp *p* *ff*

74 **I** **J** *unis.*

ff

83 **K** *Allegro molto più mosso* *div.*

f

102 **L** *Ancora più vivo*

ff *p*

II. Interlude (from Act I)

Andante mosso ♩=56
div.

pp *unis.*

7 **M**

p

14 **N** *one play* *tutti* **O**

22 *div.*

mf *p* *pp* *ppp*

III. Allegro Vivo (from Act II)

Allegro vivo ♩=162

ff *f* *mf* *ff* *f*

6 *mf* *f* *p* *f*

11 **P**

mf

16 **Q**

f

p

21 (4)

cresc.

26 (8) **R** *accel.*

f

8

attacca to Finale

IV. Finale (from Act II)

Andante mosso ♩=69 **S**

f

mf

7 div.

ff

p

13 **T**

St.Bass one play

mp

p

tutti

19 **U** **Poco più mosso** ♩=76

f

mp

sf

25 **V**

f

ff

string.

St.Bass

mp

31

mf

mf

f

3 3 3 3

tratt.

36

sostenuto

ff

fff