

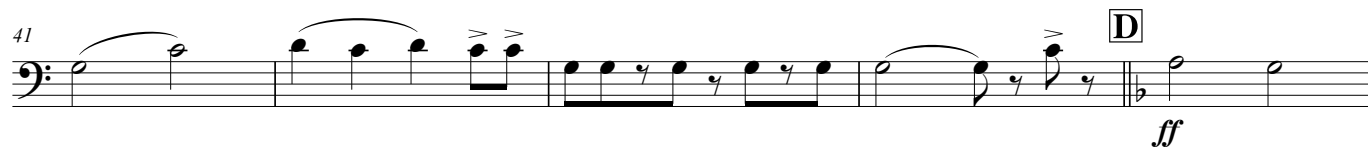
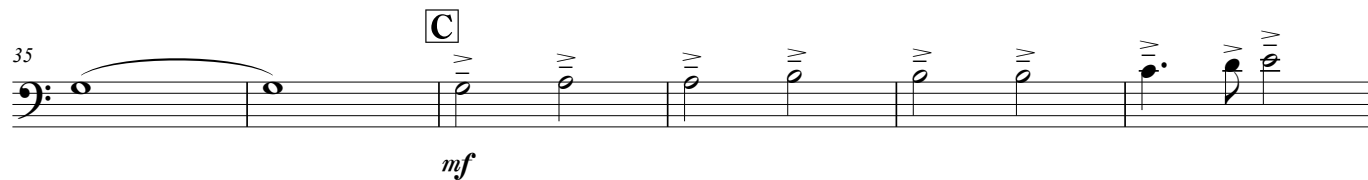
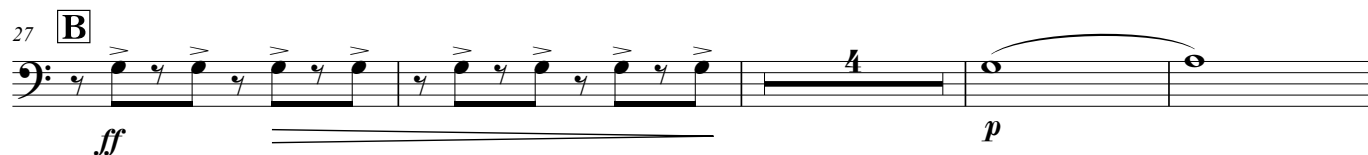
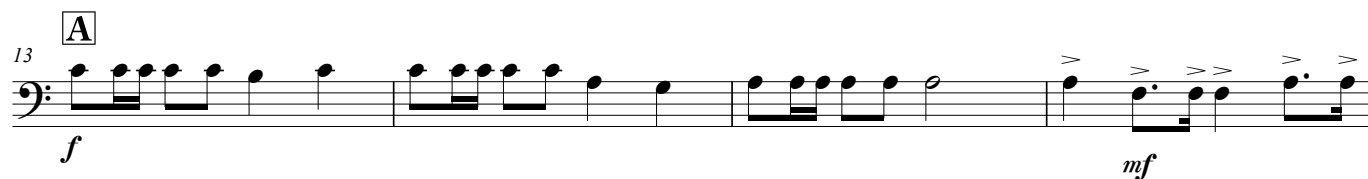
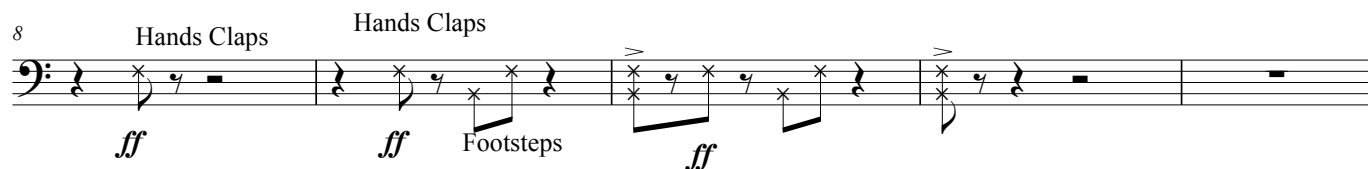
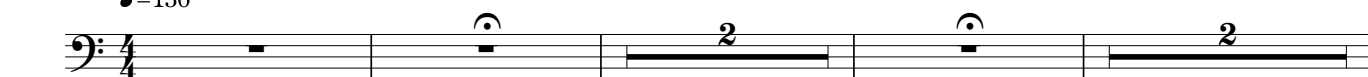
Bass Trombone in B \flat
(B. C.)

"Die Csárdásfürstin"

Selections from Operetta in 3 Acts

Emmerich Kálmán
arr. by Eiji Suzuki (2008~2009)

$\text{♩} = 136$



Bass Trombone in B \flat (B. C.)

51 **E**

f

59

65 **F**

ff

70 **G**

f

75

f

80

85 *allarg.*

90 **H** Cantabile (♩=72) *rit.* **I** Moderato (♩=80)

mp *p*

105

113 **J** Allegro (♩=104)

Bass Trombone in B^b (B. C.)

120 *rit.* *ritard.* *mf*

132 **K** Assai moderato ♩=96 *mf*

138 *mf* *rubato*

145 *allarg.* **L** *ff* *rit.*

152 *f* **M**

157 *accel.* *option* *mp*

164 **Vivace** (♩=136) *play* *f*

171 **N** *f*

Bass Trombone in B^b (B. C.)

