

## 2nd Trombone in B<sup>b</sup> (B. C.)

## "Gräfin Mariza"

## Selections from Operetta in 3 Acts

*(Small Version)*

Emmerich Kálmán  
arr. by Eiji Suzuki (2015)

arr. by Eiji Suzuki (2015)

**Lamentoso** (♩=60)

**[A] Stürmisch** (♩=96)

**Rubato** (♩=80)

**[B]**

**[C] Molto moderato** (♩=100)

**[D]**

**[E] Espressivo** (♩=100)

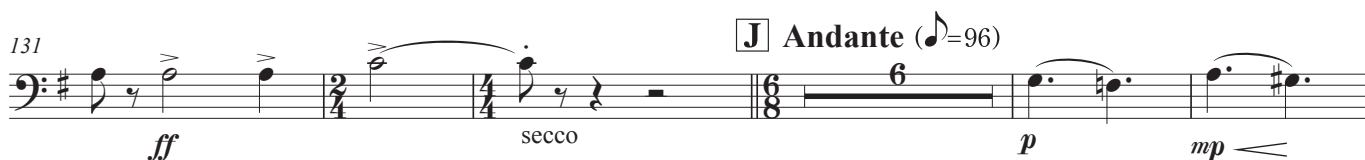
**Molto accel.** (♩=66) (♩=138)

**Rubato** (♩=66) (♩=138)

**Molto accel.** (♩=66) (♩=138)

2nd Trombone in B<sup>b</sup> (B. C.)

**F** Allegro (♩=144)



2nd Trombone in B $\flat$  (B. C.)

168

*mf*

176

*mf* *mf*

183 **N**

*f*

189 **O**

*mf* *f*

195 **P Dramatico** (♩=88)

*mf* *f*

201

206 **Q Allegro moderato** (♩=120)

*mf* *p*

213

221

*f*

2nd Trombone in B<sup>b</sup> (B. C.)

229 **R** Allegro vivace (♩=152)

*p*

245 **S**

*f*

253

261 **T**

269

277 **U** Presto (♩=166)

*ff*

285

293