

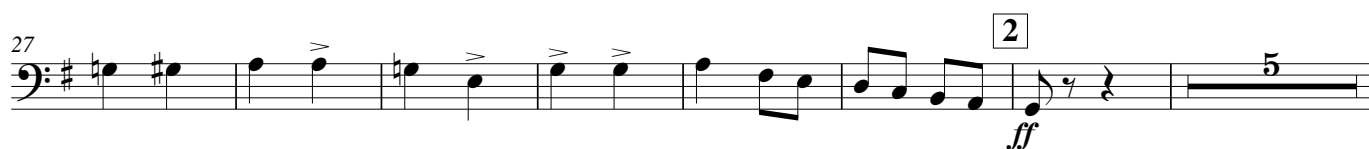
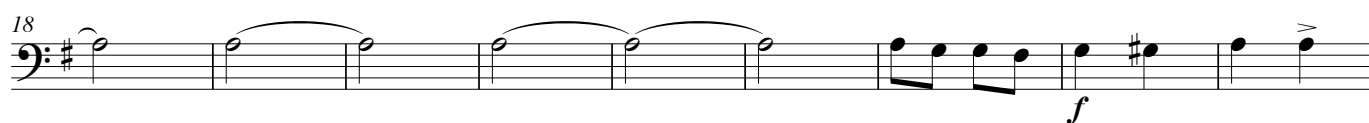
3rd Trombone  
in B $\flat$  (B.C.)

"The Merry Widow" Selections  
for wind ensemble  
< Small version >

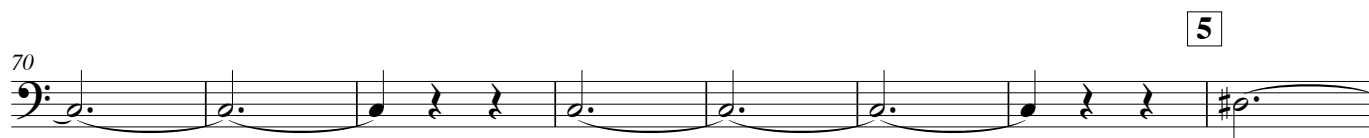
Franz Lehár  
Arranged by Eiji Suzuki

[ No.1 : Opening Chorus ]

**Prestissimo**



[ No. 3 : Entrance ]



85 *f* *cresc.*

## [ No. 7 : VILIA ]

157 *f* *rit.* **10** **Più mosso** *mp*

164 *mf*

172 *pp* *rit.* *a tempo* *p*

181 *mf* *rit.* **11** **Meno mosso** **12** *p*

205

213 *cresc.* **13** **Broadly** *ff*

221 *mf* *molto allarg.* *fp* *ff* *fff* **Meno mosso**

229 *mf* *a tempo* (**13**)

## [ No. 9 : March ~ Trio + No. 18 : Finale ]

238 **14** **Tempo di Marcia** *p*

246

254 *f* *p* **15**

3rd Trombone

262 *cresc.*

270 **16** *fz* *f cresc.*

**17** **18** *accel.* *f* *p*

299 *cresc.*

307 **19** *fz*

316 *molto allarg.* *cresc.*

321 **20** *Presto* *ff*

329

337 **21** *cresc.*

345 **22** *Più mosso*

354