

1st & 2nd Horns in E \flat "The Merry Widow" Selections

for wind ensemble

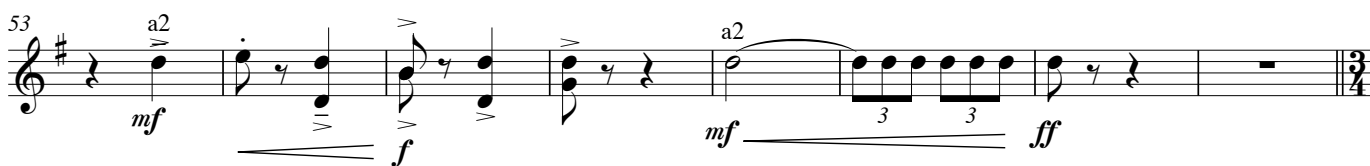
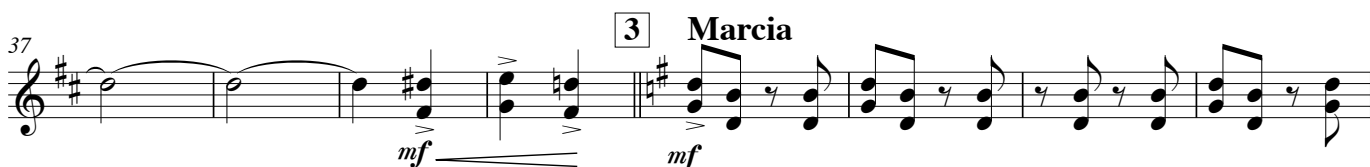
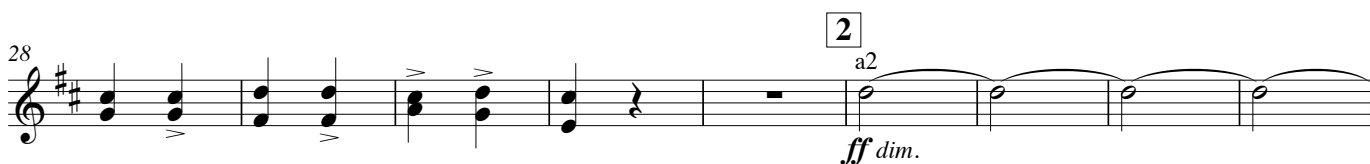
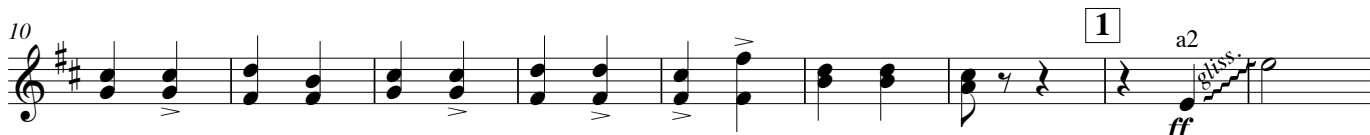
< Large version >

Franz Lehár

Arranged by Eiji Suzuki

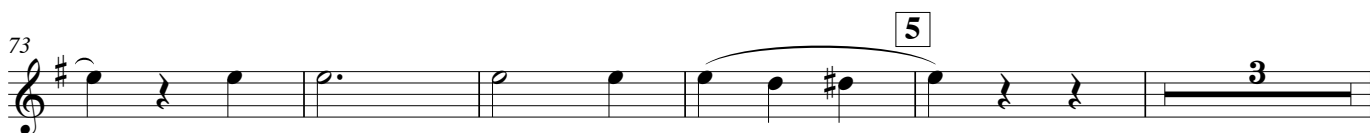
[No.1 : Opening Chorus]

Prestissimo



[No. 3 : Entrance]

[4] Allegro (♩ = ♩)



81 *gest.* *f* *open* *fp cresc.*

[No. 3a : Ball-Music]

88 *ff* *ff* *f* **6 Walzer**

94

100

106

112

118

[No. 7 : Opening Chorus]

Allegretto moderato

124 **7** **Meno mosso rit.** *mp* *mp* *pp*

133 **8** **Allegretto (meno mosso)** *f* *a2*

139 *ff* *a2*

147 *f* **9** *2*

V.S.

[No. 7 : VILIA]

155 *mf* *f* *a2* *rit.* **10** *mp* **Più mosso** *a2*

163 *mf*

171 *rit.* *a tempo* *pp* *p*

180 *rit.* *a2* **11** **Meno mosso** **12** *mf* *16* *3* *Solo* *p*

205 *p* *a2*

213 **13** **Broadly** *a2* *ff*

221 *mf* *molto allarg.* *ff* *fff* **Meno mosso**

229 *a tempo* (**13**)

[No. 9 : March ~ Trio + No. 18 : Finale]

238 **14** **Tempo di Marcia** *mf* *f* *p* **15**

259 *cresc.*

268 16 ^{a2} ⁺

fz *f* *f*

276 17 12

cresc. *f*

295 18 *accel.*

p

304

cresc.

312 19 ^{a2} ⁺ *molto allarg.*

fz *f* *f* *cresc.*

321 20 **Presto**

ff

329

ff

337 21

cresc.

345 22 **Più mosso**

ff

354

cresc.