

Tuba in B $\flat$   
(Bass Clef)

# Frau Luna

Highlights from the Operetta

Paul Lincke (1866-1946)  
arr.by Makoto Onodera

[Melodram] **Moderato**  $\text{♩} = 80 \text{ ca.}$  [1] *rit.* [Festmarsch] **Marcia**  $\text{♩} = 108 \text{ ca.}$

22 [2] **Animato** *mf* *ff*

29 [3] *f*

35 **Ver.1** *ff* **Ver.2** *molto rit.* *ff mf* [4] **Allegro**  $\text{♩} = 132 \text{ ca.}$  *f*

42 [5]

49

56 [6]

63 [7] **Meno mosso**  $\text{♩} = 120 \text{ ca.}$  *rit.* [8] **Andantino**  $\text{♩} = 48 \text{ ca.}$  [Von Sternen umgeben] *pp* one player

73 *tutti rit.* *cresc.*

80 [9] *a tempo* *rit.* *a tempo* *rit.* *f* *mp* *pp*

87 [10] **Valse**  $\text{♩} = 63 \text{ ca.}$  *ff* *mf* *ff* [11] *f*

97

# Tuba in B<sup>b</sup> (B.C.)

107 12

116

125 13 Poco meno mosso

135 14 *f* *poco rit.* *meno mosso rit.*

145 *Slow* 15 *Allegro* ♩=138 ca. *p* [Ist die Welt auch noch so schön]

154

163 16 17 *cresc.*

172 18 Poco più mosso ♩=144 ca. *mf* *f*

182 19

191 20

201 21 22 Andante ♩=88 ca. *ff* *f*

211 23 *f*

218 24 Meno mosso ♩=72 ca. *rit.* *f* *f* **2**

# Tuba in B<sup>b</sup> (B.C.)

312 [35]



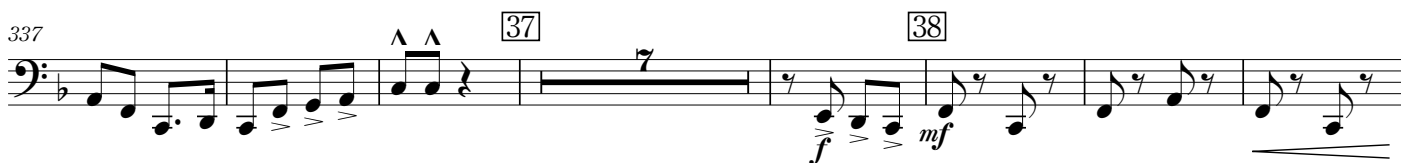
320 [36]



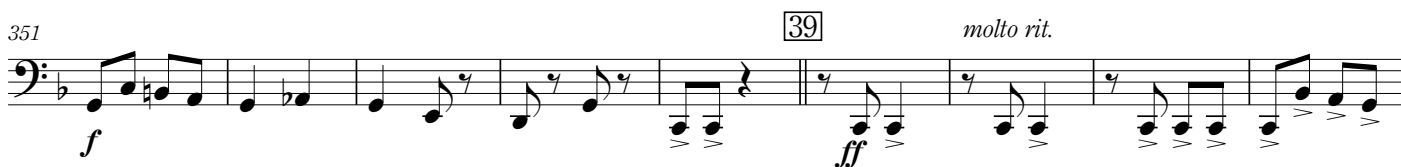
329



337



351



360 [40] **Maestoso** ♩=112 ca.

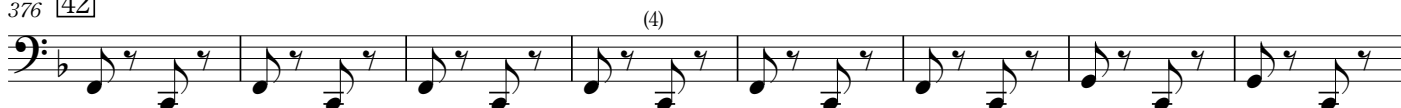
*accel.*



368 [41] ♩=132 ca.



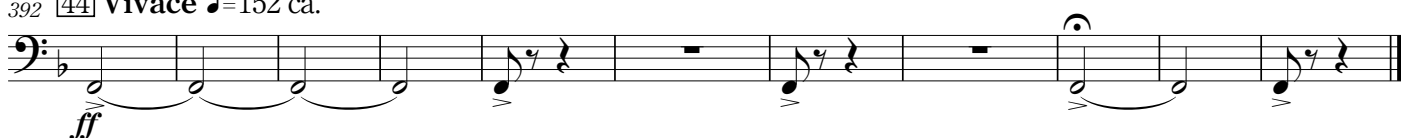
376 [42]



384 [43]



392 [44] **Vivace** ♩=152 ca.



# Tuba in B<sup>b</sup> (B.C.)

[Schlösser, die im Monde liegen]

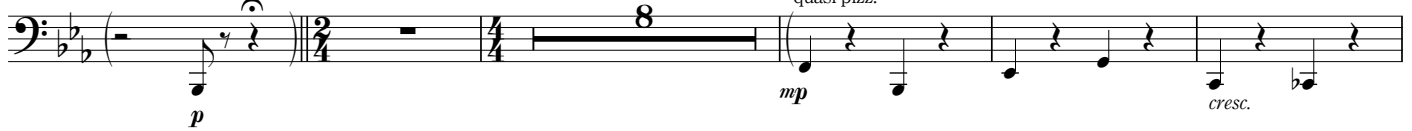
[26] **Più mosso** ♩=66 ca.

226

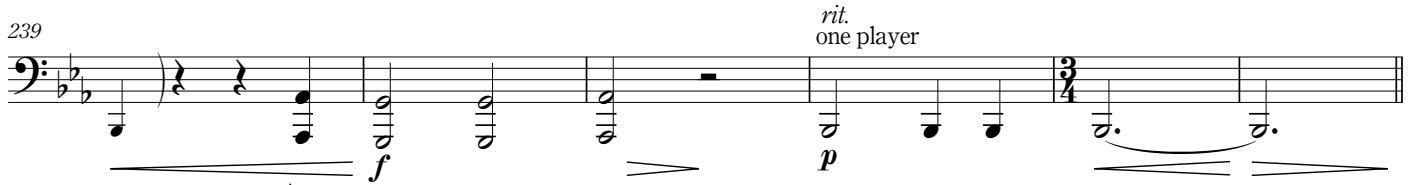
Opt. St.Bass  
quasi pizz.

[25] **Meno mosso** ♩=56 ca.

Opt. St.Bass  
quasi pizz.



239



[27] **Valse lento** ♩=84 ca.

245 Opt. St.Bass  
quasi pizz.



253 [28] **Poco più**

accel.



261 [29] **Più mosso** ♩=126 ca.



269 [30]

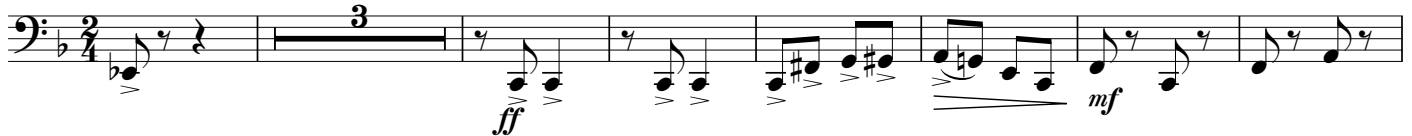
rit.



[Berliner Luft]

276 [31] **Marcia, Allegro** ♩=126 ca.

[32]



286



294

[33]



303

[34]

(4)

