

Bass Tuba in E $\flat$

# Cavalleria Rusticana

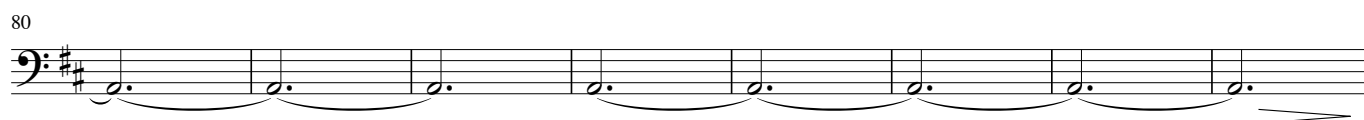
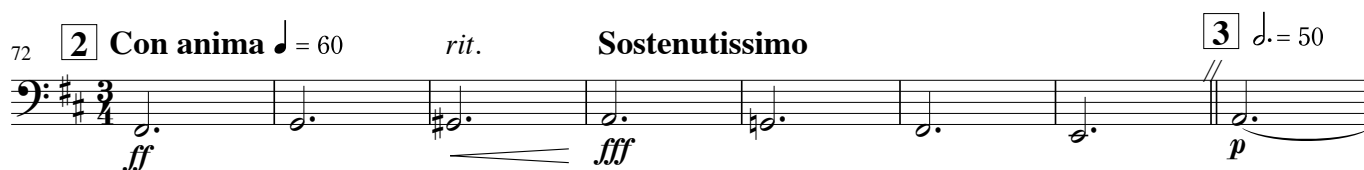
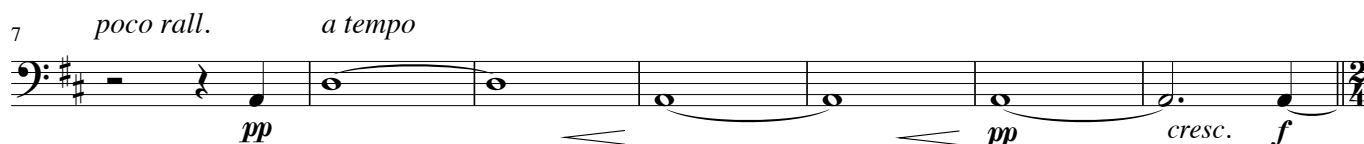
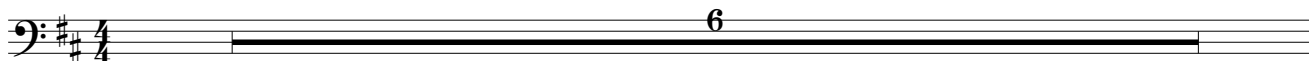
A Selection from the Opera

Pietro Mascagni

arr. by Koh Shishikura, 2007

## Preludio e Siciliana

Andante sostenuto  $\text{♩} = 50$



## Brindisi, Viva il vino spumeggiante

97 **4**  $\text{♩} = 72$  Più mosso  $\text{♩} = 144 \sim 160$



Bass Tuba in E<sup>b</sup>

120 *a tempo* *rall.* **6** *rit.* *a tempo*

*mf* *f*

131 *rit.* *a tempo* *animando*

*p*

139 **7** *rit.* *a tempo* *rit.* *a tempo*

*f*

147 *animando* *rit.* **8** *Più mosso* ♩ = 144

*ff*

156

*ff* *ff* *ff*

165

*ff* *ff* *ff* *f*

174 *allargando* **9** *a tempo* ♩ = 92

*ff* *p* *f*

181 *rall.*

188 *rit.* *a tempo* *rit.* *a tempo*

*ff*

195 *rit.* **10** *Più mosso* ♩ = 160

Bass Tuba in E<sup>b</sup>

202 *sempre più forte ed animando*

210 *p*

219 *marcatissimo*

Scena e Preghiera

226 **11** Lento  $\text{♩} = 40 \sim 50$  ※ 空いている奏者は任意に選んだChoirのパートを歌う

253 **12**  $\text{♩} = \text{♩}$  *mp*

258 **13** *mf*

263 *cresc.* *molto rit.* **14** *a tempo* *f*

268

273 *rit.* **15** *a tempo* *mp* *cresc.* *ff*

279 *poco a poco stringendo* *molto rit.* *mf* *cresc.* *ff*

285 *a tempo* *rit.* *ff*