

Bass in E \flat

Richilde Overture

for Wind Ensemble

Comp. by G. PARÈS
Arr. by Tomohiro Tatebe (1991)

Andantino con moto (♩=82)

9 **A**

sempre *pp*

17 **B** 1. *mf*

26 unis. *p* *mf* *poco a poco cresc.*

34 **C** *f* *poco a poco cresc.*

43 *ff* *dim. molto*

49 **D** *p* *cresc.* *mf poco a poco cresc.*

59 **E** *Largament et bien soutenu* *fff* *suivez*

67 **Plus lento** **Lento** *a tempo* *sfz* *suivez* *p*

76 **F** *Allegro* (♩=116) *mf* *cresc.* *p*

85 *mf* *sfz* *cresc.*

94 **G** *cresc. molto* *f*

Bass in E^b

100

f *ff*

107

ff *p subito* **H**

116

mf *mf* *sfz*

123

cresc. molto *3* *3*

131

f *ff* *cédez un peu* *4*

142 **I** *a tempo*

pp *3* *3*

154

cresc. molto *pp*

163 **J** *Comoure facultative de la lettre **J** a la lettre **M**

p *poco a poco cresc.* *3* *3*

174

ff

182 **K**

ff *ff*

188

ff *sfz*

195

sfz *ff*

202 *rall. molto* **L** *a tempo*

sfz *mf* *3* *3*

Bass in E^b

212



220



228

M



236



244

N Largament et très soutenu

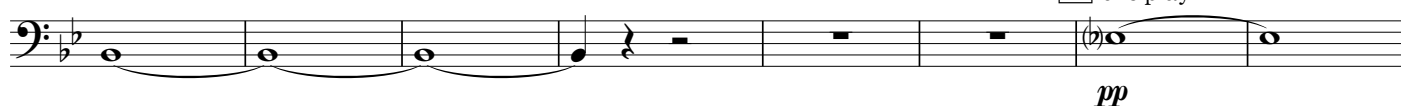


252

G.P.

G.P.

O one play



260



267

unis.

P Allegro (♩=116)



277



288

Q



294



300



306

R



Bass in E \flat

314



320



327



339



347



355



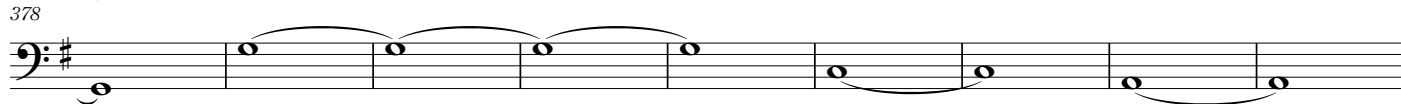
363



371



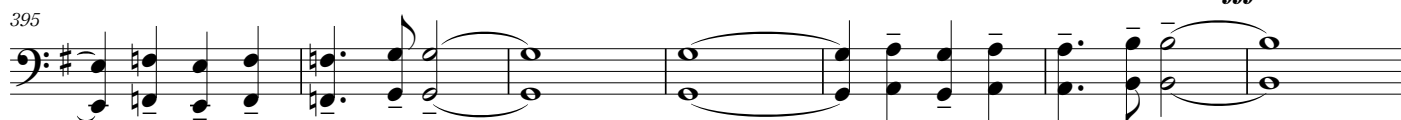
378



387



395



402



410

