

1st & 2nd  
Trombones in B♭  
(Treble Clef)

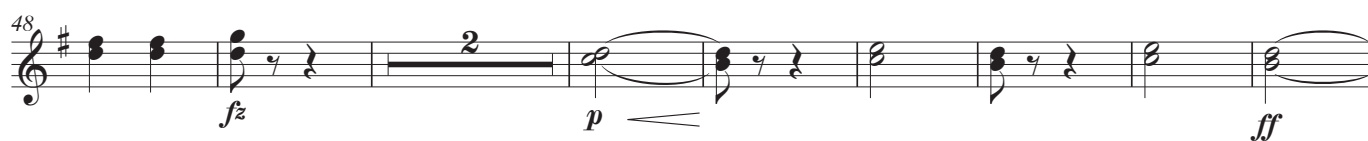
# "Die Fledermaus"

Selections from an Operetta in 3 acts

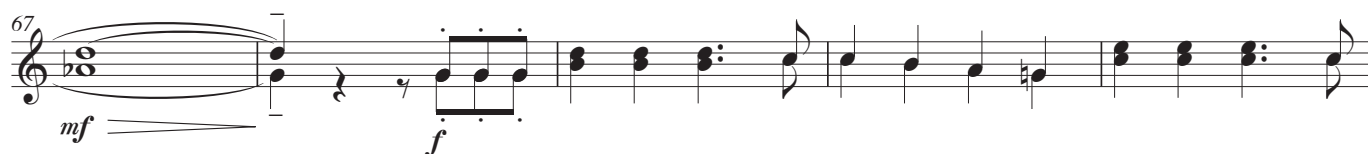
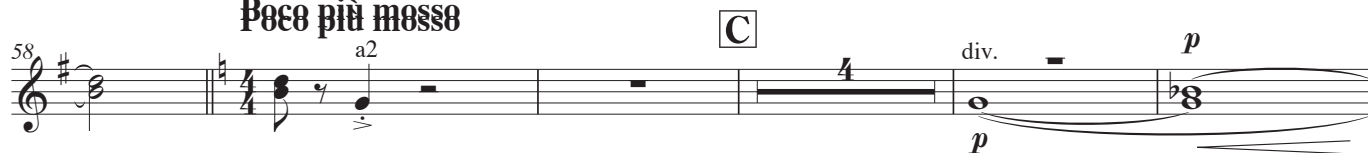
Johann Strauss II (1825-1899)

Arr. by Eiji Suzuki

## Allegretto con fuoco



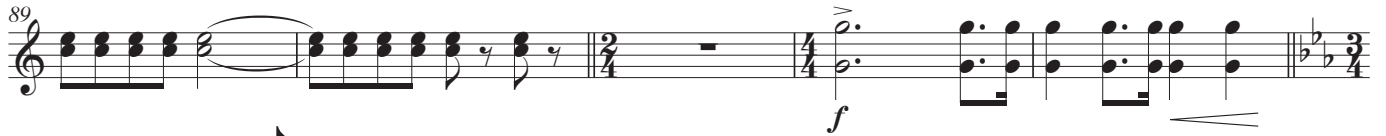
## Poco più mosso



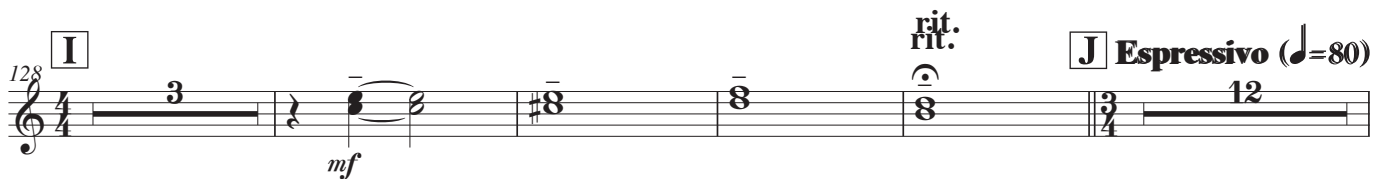
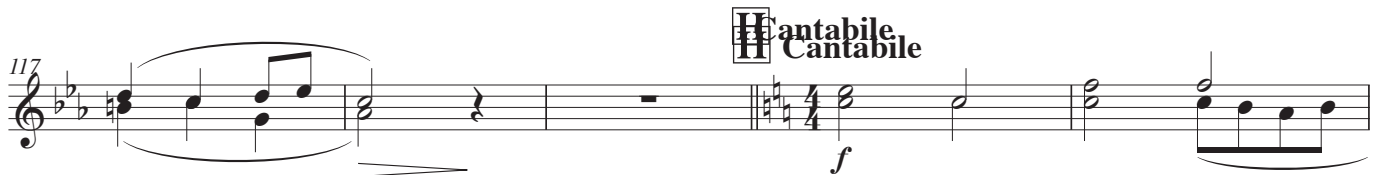
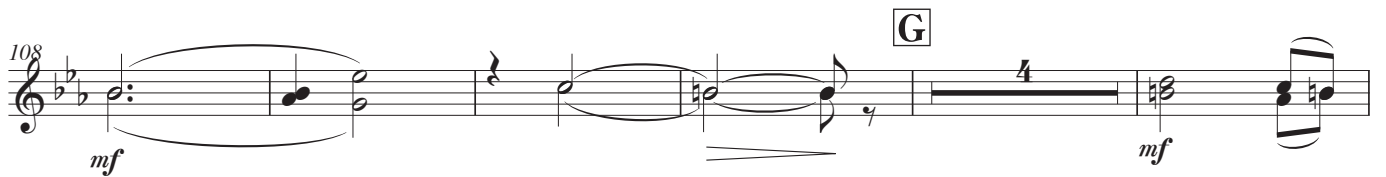
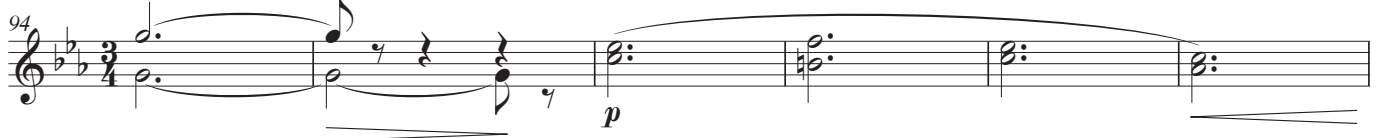
1st & 2nd Trombones in B $\flat$  (Treble Clef)



**E** **L** istesso tempo (♩=152)  
**E** **L** istesso tempo (♩=152)



$\frac{1}{2}$  tempo (♩=152)  
 $\frac{1}{2}$  tempo (♩=152)



1st & 2nd Trombones in B $\flat$  (Treble Clef)

**Andante** ( $\text{♩} = 88$ )

**ff**

**poco accel.**

$\text{♩} = 72$   
 $\text{♩} = 72$

**p** **f**

**M**  $\text{♩} = 144$   
a2

**f**

**div.**

**mf**

**sf** **sf**

**N**

**f** **sf**

**div.**

**sf** **sf**

**div.**

1. a2 2.

**f**

**O**

**sf** **sf** **sf**

**P**

**sf** **f**

1st & 2nd Trombones in B $\flat$  (Treble Clef)

247 *sf* *mf* *sf* 2 *mf* *sf*

250 *mf* *f* *f* 3 8

266 *p* *f* *p* *f*

273 9 *f*

288 *sf* *sf*

295 a2 *f* *sf* *div*

302 a2 *sf* *div*

310 1. a2 2. *f* *S*

317

325