

B♭ Basses (Bass Clef)

# Die schöne Galathee

## Ouverture

Fr. v. Suppé  
trans. by A. Isozaki

**Allegro spiritoso con brio** (♩=108)

First system: Bass clef, key of D major (two sharps), 6/8 time. The music begins with a forte (*ff*) dynamic. A first ending bracket labeled '1' spans the first two measures of the second system.

Second system: Continues the first system. A second ending bracket labeled '2' spans the last two measures of the system.

Third system: Starts with a piano (*p*) dynamic and a crescendo (*cresc.*). It features a forte (*f*) dynamic and another crescendo (*cresc.*). The system ends with a fortissimo (*ff*) dynamic.

Fourth system: Continues the musical line with various dynamics and articulations.

Fifth system: Continues the musical line with various dynamics and articulations.

**Andante** (♩ = 60)

First system: Bass clef, key of D major, 12/8 time. The system ends with a double bar line and a key signature change to D minor (two flats).

Second system: Continues the Andante section. It includes first and second endings, marked with measures 4, 6, 2, and 2. The dynamic is piano (*p*).

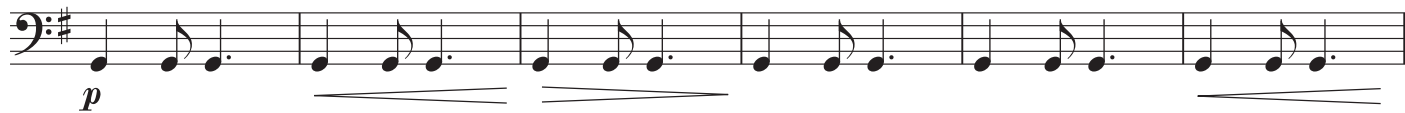
Third system: Continues the Andante section. It includes a first ending marked with measure 10. The system ends with a fortissimo (*ff*) dynamic and a key signature change to D major (two sharps).

**Allegretto animato** (♩ = 69)

First system: Bass clef, key of D major, 6/8 time. The music begins with a pianissimo (*pp*) dynamic. It features fortissimo (*ff*) dynamics and a crescendo (*cresc.*) in the latter half of the system.



4



5



6



7



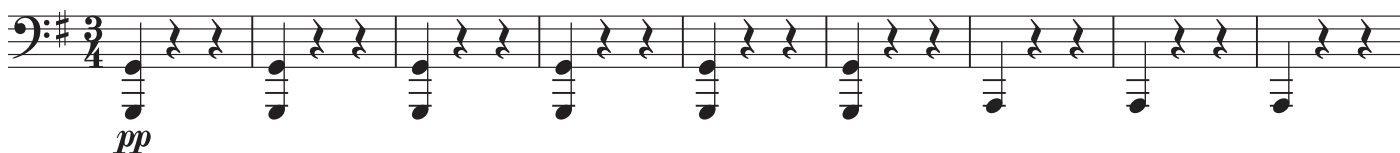
8



rall. un poco morendo



**Più moderato** (♩ = 66)



9



**rallent. un poco morendo**



**Allegro** (♩ = 138)

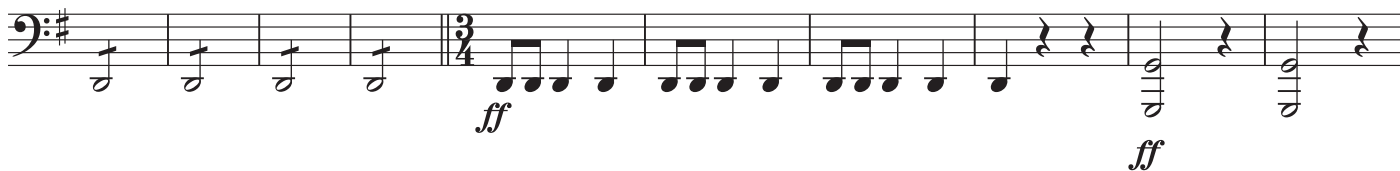


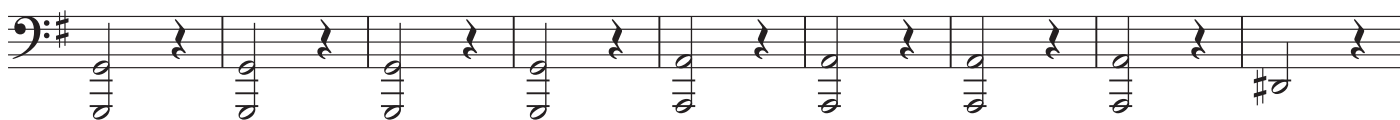
10



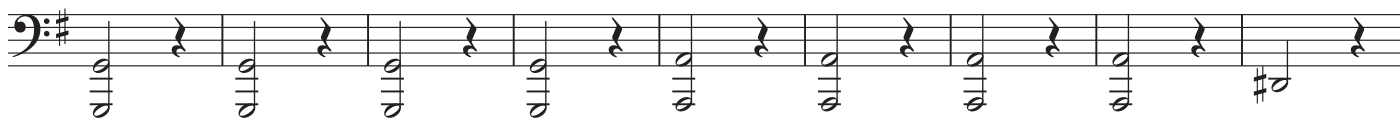
**Tempo I. (Allegro)** (♩ = 66)

11





12



13



Poco più mosso (♩.=104)



Ancora più mosso (♩.=120)

