

Bass Trombone in B^b
(B. C.)

¿Estilo de España por qué?

Masamicz Amano (2008)

♩ = 60

con sord.

A

mp

16

24

32

B ♩ = 88

senza sord.

f

3

49

p

3

p

56

C ♩ = 108

5

2

f p f p f

mp mf

67

f p f p f

mp mf f p f

73

p f f p mp mf f p mp mf

D

79

f f p mp mf f p mp mf

87

f f p mp mf f p mp mf

E

95

f p f p f

mp mf f p f

Bass Trombone in B^b (B. C.)

101 **F**

p *f* *f*

106 *allarg. molto*

f

111 **G** *a tempo*

ff *mp*

116 **H**

ff *p* *mp* *mf* *f* *p*

122 **I**

mp *mf* *f* *f* *p* *mp* *mf* *f* *p*

130

mp *mf* *f* *f* *p* *mp* *mf* *f* *p*

138 **J**

mp *mf* *mp*

143

ff

148 **K**

ff

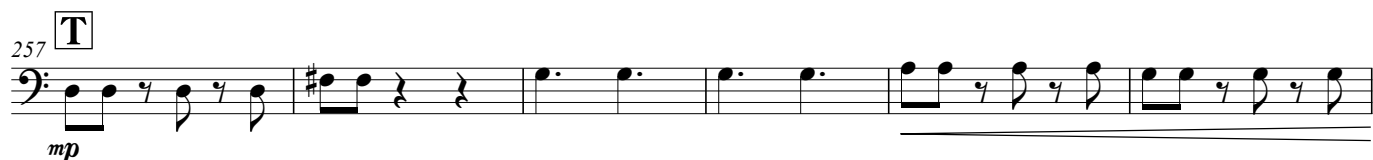
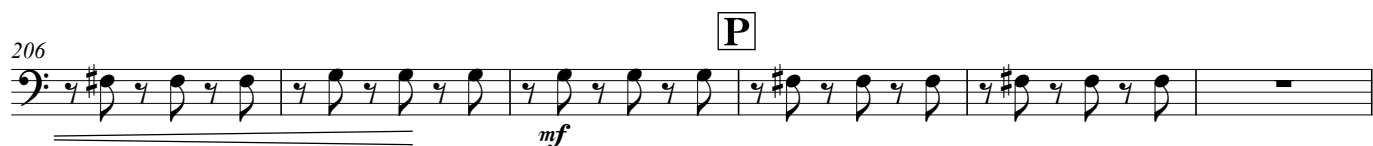
153 **L** $\text{♩} = 80$ *rit.* **M** $\text{♩} = 69$

f *mf*

181 **N** $\text{♩} = 168$

f

Bass Trombone in B^b (B. C.)



Bass Trombone in B^b (B. C.)

275

281

289

295

301

307

315

319

324

329

334

339

V

W $\text{♩} = 108$

X

Y $\text{♩} = 69$

Z Più mosso

mp

ff

ff

string. poco a poco

cresc. poco a poco

allarg.

ff