

1st & 2nd
Horns in E^b

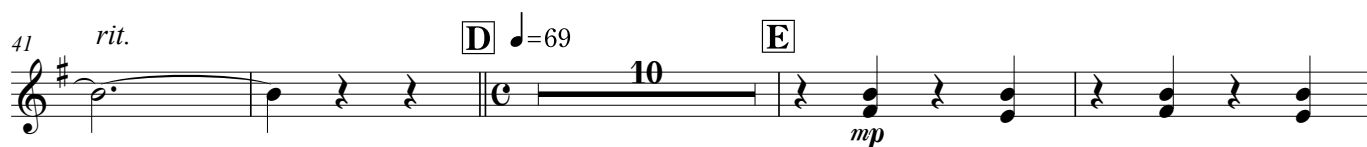
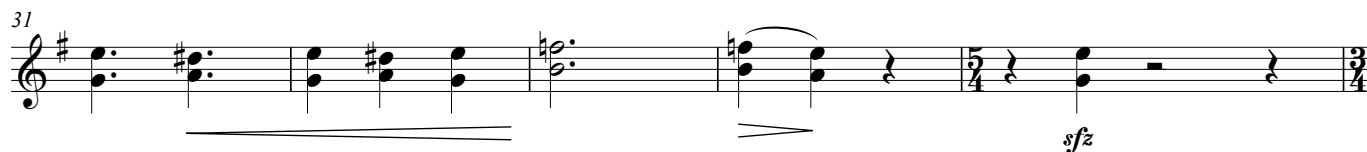
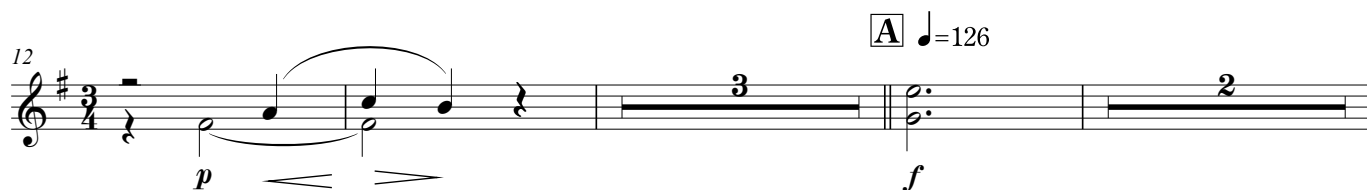
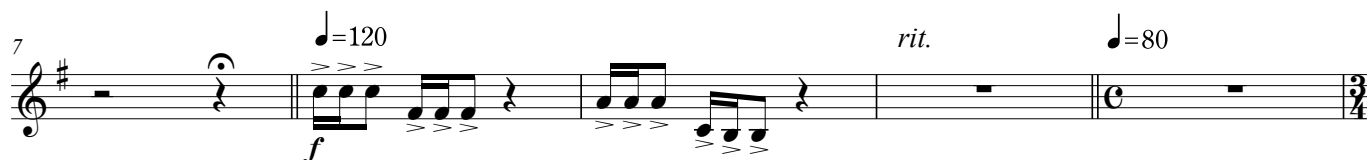
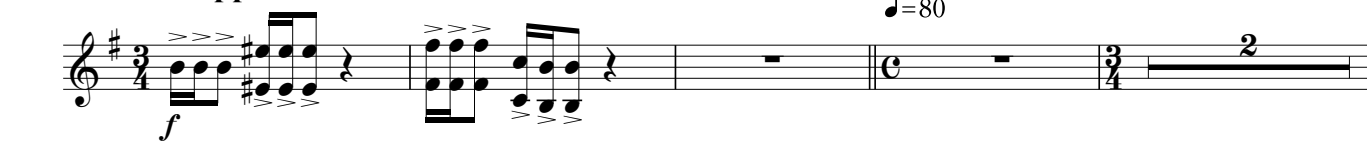
Preludio Espressiva

per Shinji FURUKAWA

Masamicz Amano (2016)

Con appassionato (♩=120)

♩=80




1st & 2nd Horns in E^b

65 *accel.* - - - - *poco* - - - - *a* - - - - *poco* - - - -

mf

3 3

69 G *molto* ♩=138



The musical score for the 69th measure is written on a single staff. It begins with a treble clef, a key signature of one sharp (F#), and a common time signature (C). The measure is marked with a 'G' in a box and the tempo marking 'molto'. The tempo is indicated as ♩=138. The music features a complex rhythmic pattern with triplets and a final quarter note. The dynamics range from mezzo-forte (mf) to fortissimo (ff).

73 

77

77

82

87

mp *f* *ff* *f*

92 **J**

ff

97  Musical notation for measures 97-100. Measure 97: whole rest. Measure 98: quarter note G4, quarter note A4, quarter note B4, quarter note C5. Measure 99: quarter note B4, quarter note A4, quarter note G4, quarter note F#4. Measure 100: quarter note E4, quarter note D4, quarter note C4, quarter note B3. A key signature change to one sharp (F#) is indicated at the start of measure 100. A repeat sign is at the end of measure 100. A box with the letter 'K' and a tempo marking of quarter note = 72 are at the end of the staff.

102

p

5

L

accel. - - - - - rit.

1st & 2nd Horns in E^b

112 **M** $\text{♩} = 112$

p

125 **N** $\text{♩} = 144$

mf

133 **O**

138

f *mp*

143 **P**

f *f*

150 **Q**

ff

155 **R**

160

f *mp* *ff*

165 **S**

f

1st & 2nd Horns in E^b

