

Tuba in B^b (B. C.)

Trois Fragments

I. Allegro

Masamichi Amano
(2017/2020)

♩=120

f

ff

♩=72

5 Mouthpiece tapping

mp

fp

f

fp

15

ff

f

A ♩=144~152

19

B

f

ff

30

C

p

D

p

39

mp

ff

E

47

rit.

F ♩=144~152

pp

f

54

mp

ff

f

58

ff

rit.

G.P.

Tuba in B^b (B. C.)

II. Virtuoso

$\text{♩} = 60$

G

fp

15 **H** *rit.* **I** *a tempo*

f *fp* *f* 3

22

6

26 **J** *rubato* *atacca*

7

III. A la manière de Latino

$\text{♩} = 132 \sim 138$

ff

7 **K** *mf*

3

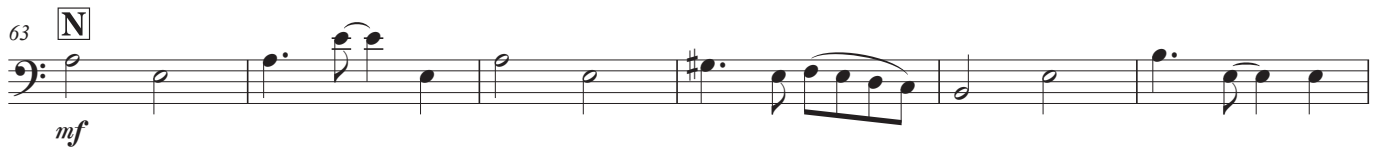
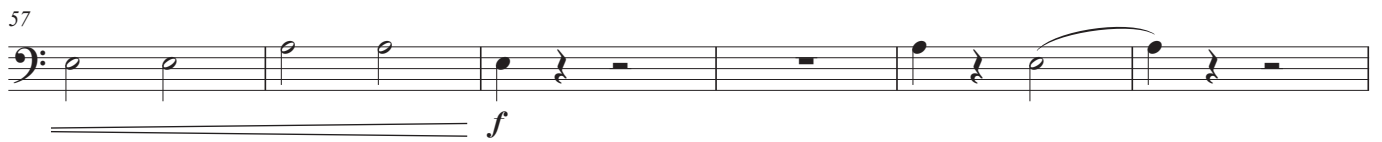
15

21

27 **L** C. Bass *p*

ff

Tuba in B^b (B. C.)



Tuba in B^b (B. C.)

81 **O** **P**

f

12

98

104

110 **Q**

ff *f*

116

122 *molto rit.* *a tempo*

128 *mp*

(♩=♩)

133 *ff*