

Tuba in E^b
(B. C.)

Symphonie No. 1 "Gral"

IV. Rondo - Coda



Masamicz Amano (2010)

Moderato (♩=88)

p *cresc.* *ff*

allarg. - - - a tempo

pp

13 **A** ♩=60 *p* *mf* *pp*

28 **C** **Allegro** (♩=132) *unis.*

40 **D** *f*

46 *unis.* **E** 6

57 **F** *f* *mp*

63 *cresc.* *f*

69 *unis.* *mp* **G**

74 *f* *mp* *f*

Tuba in E^b (B. C.)

79 H

mp cresc. ff

83

mp ff

87 unis.

mp ff

91 I

mp cresc. ff

97 J ♩=80

mp cresc. ff

119 K ♩=69

mp cresc. ff

125 L Allegro (♩=132)

mp cresc. ff

131

mp cresc. ff

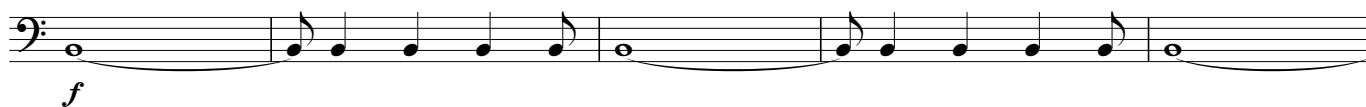
135

mp cresc. ff

139 unis.

mp cresc. ff

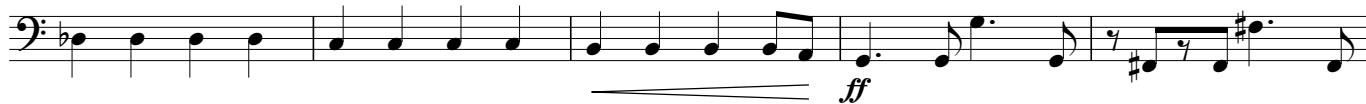
Tuba in E^b (B. C.)

143 **M**

N

[illegible]

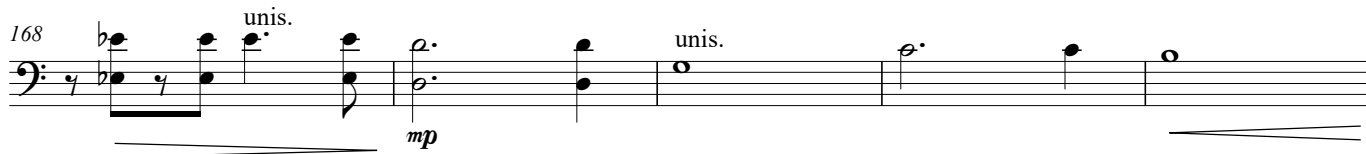
O



unis.



unis.



P



177

177

181

ff

Q



Tuba in E \flat (B. C.)

192 *rit.* *unis.*

198 **Largetto** **R** ($\text{♩}=60$) **S** *pp* *mp* *unis.* **T** **Un poco più mosso**

227

233 **U** *mp* *mf* *mp*

242 *p* *f* *allarg.* **V** **Poco più mosso** ($\text{♩}=69$) *unis.*

248

254 *rit.* **W** **Molto Adagio** ($\text{♩}=56$) *unis.* *mp*

260 *mf* *String - - en - - do - - - - - poco - a - poco* *allarg. - - -*

266 **X** $\text{♩}=72$ *ff* *allarg. - - - -*

272 *a tempo*

277 *allarg.*