

Tuba in B^b
(B. C.)

Symphonie No. 1 "Gral"

IV. Rondo - Coda



Masamicz Amano (2010)

Moderato (♩=88)

p *ff*

7 *cresc.*
allarg. - - - a tempo *pp*

13 **A** ♩=60 *p* *mf* *pp* **B**

28 **C** **Allegro** (♩=132) *unis.*

40 **D** *f*

46 *unis.* **E** 6

57 **F** *f* *mp*

63 *cresc.* *f*

69 *unis.* *mp* **G**

74 *f* *mp* *f*

Tuba in B \flat (B. C.)

79 H

mp *cresc.* *ff*

83

mp *cresc.*

87 unis.

mp *cresc.*

91 I

ff *cresc.*

97 J $\text{♩} = 80$

unis. *rit.* *unis.* *p* 16

119 *rit.* K $\text{♩} = 69$

f *mf*

125 L **Allegro** ($\text{♩} = 132$)

unis. *f* 16

131

p *cresc.*

135

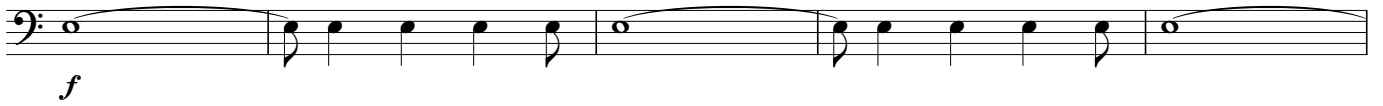
mp *cresc.*

139 unis.

unis. *cresc.*

Tuba in B \flat (B. C.)

143 **M**



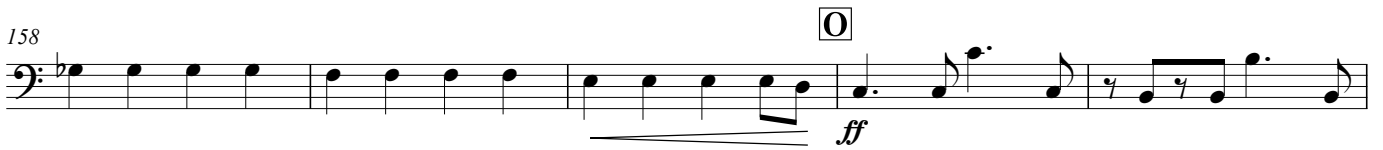
148



153



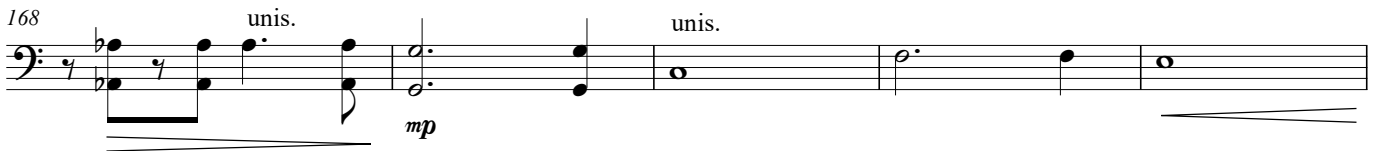
158



163



168



173 **P**



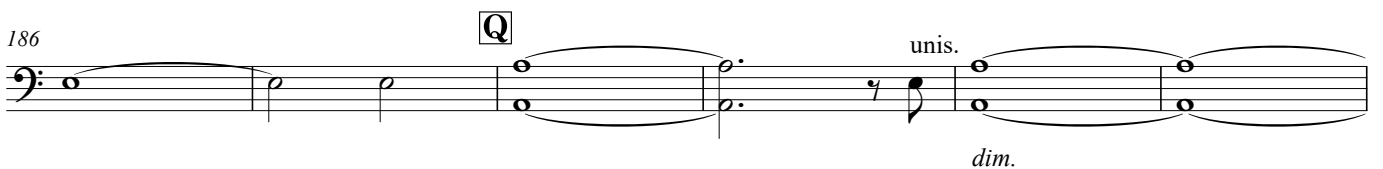
177



181



186



Tuba in B \flat (B. C.)

192 *rit.* - - - - - *unis.*

198 **Largetto** **R** ($\text{♩}=60$) **S** *pp* *mp* **T** **Un poco più mosso** *unis.*

227

233 **U** *mp* *mf* *mp* **4**

242 *allarg.* - **V** **Poco più mosso** ($\text{♩}=69$) *unis.* *p* *f*

248

254 *rit.* - - - - - **W** **Molto Adagio** ($\text{♩}=56$) *unis.* *mp*

260 *String* - - *en - - do* - - - - - *poco - a - poco* *allarg.* - - - *mf*

266 **X** $\text{♩}=72$ *allarg.* - - - - - *ff*

272 *a tempo*

277 *allarg.*