

**Bass Trombone in B<sup>b</sup>**  
**(B. C.)**

2017年大津シンフォニックバンド委嘱作品

**黎明のエスキース**

Esquisse l'aurore - Sketch of Dawn

阿部勇一 作曲  
Yuichi Abe (2017)

$\text{♩} = 180 \text{ ca.}$  **Appassionato**  $\text{♩} = 150 \text{ ca.}$

5 **Appassionato**  $\text{♩} = 150 \text{ ca.}$

15 **A**

22  $\text{f}$   $\text{sf}$

28 **B**  $\text{p}$   $\text{ff}$   $\text{sf}$   $\text{sf}$

36  $\text{sf}$   $\text{ff}$

41 **Con anima**  $\text{♩} = 150 \text{ ca.}$   $\text{f}$   $\text{sf} > \text{p}$

47  $\text{f}$   $\text{ff}$

52  $\text{f}$

Bass Trombone in B<sup>b</sup> (B. C.)

59



67



75



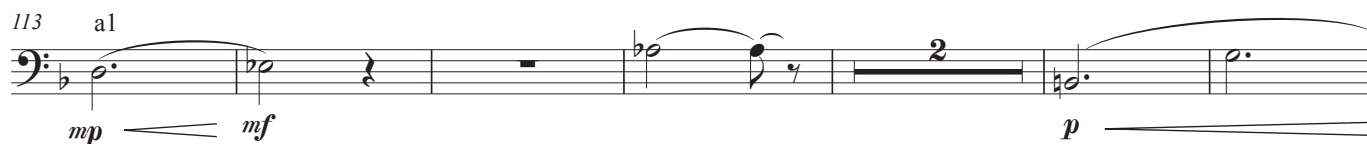
82



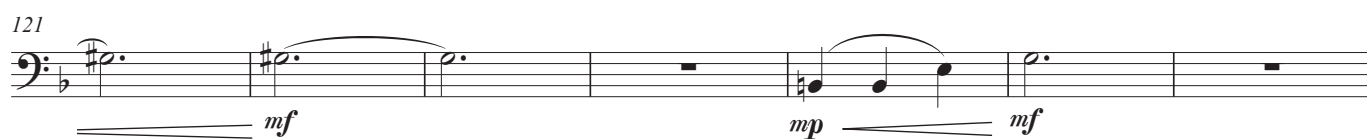
89



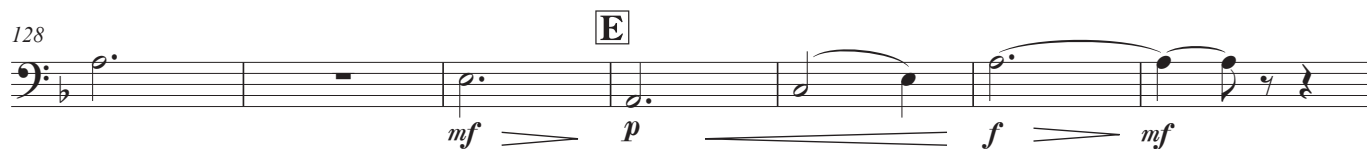
113



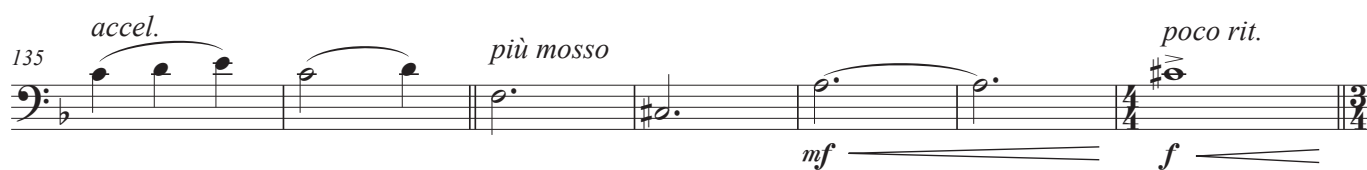
121



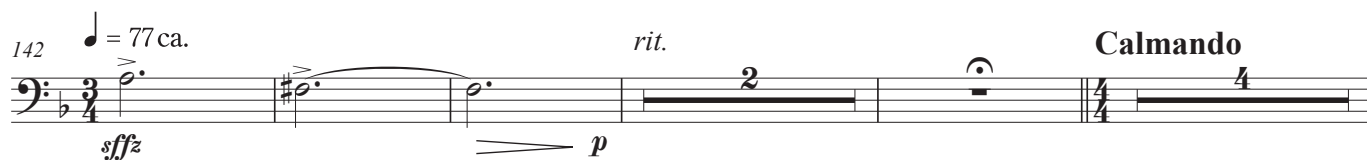
128



135



142



Bass Trombone in B<sup>b</sup> (B. C.)

152 **F** **Appassionato** ♩ = 118 ca.

157

169

176

182 **G**

194

201

212

219 **I**

Bass Trombone in B $\flat$  (B. C.)

227

*f*

237

*f* *mf*

243

*mp* *mf*

250

*mf*

257 **J** **Grandioso**

*ff*

265

*sf*

272

*sf* *rit.* *ff* *ff*

279

*ff* *mp* *ff*

291

*ff* *sub. p* *ff*