

E^b Tuba

Commissioned by Sagamihara High School Concert Band (Kanagawa, Japan)

THE BATTLE OF LEPANTO

Wind Ensemble

Hayato Hirose (2009)

Maestoso $\text{♩} = 60$

A

f *p* *f* *p* *f* *mp*

6 *mf* *f* *poco rit.*

B

Allegro animato $\text{♩} = 100$

13 *ff* *f* *mf* *mp* *mp*

20 *mp* *mp* *cresc.* *mf*

C

31 *f* *mf*

40 *f* *dim.*

D

49 *mp* *marcato*

57 *mf* *cresc.* *f* *mf*

E

65 *f*

72 *ff* *ff*

E♭ Tuba

F Andante ♩=72

80 St. Bass cue (1 player)



88 **G**



96



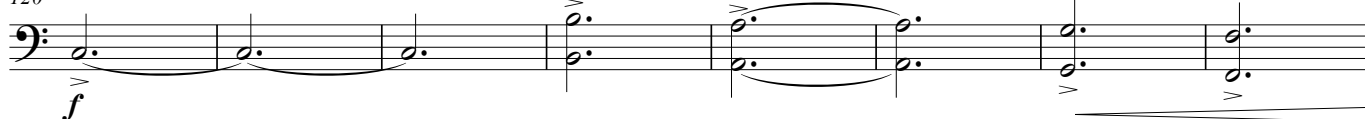
104 **H**



112 **I**



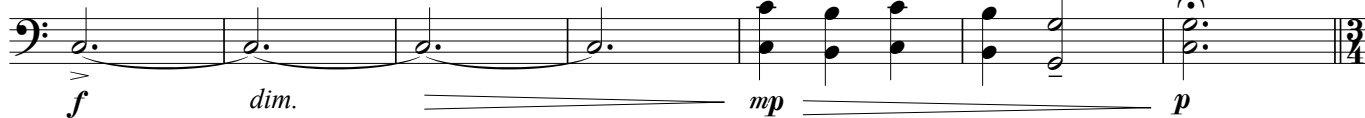
120 **J**



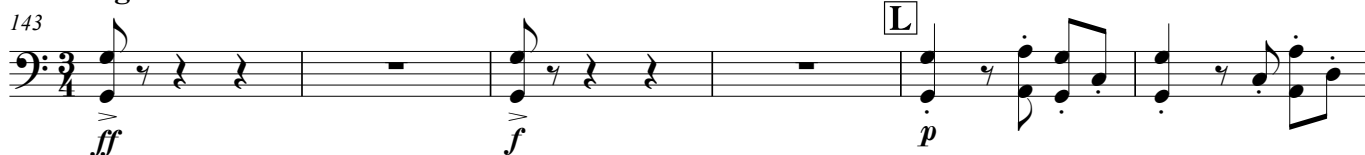
128



136 **K**



Allegro ♩=112



E^b Tuba

