

Tuba in E \flat
(Bass Clef)

Spring Green Wheat

群馬県立前橋南高等学校吹奏楽部 委嘱作品

麦の穂 風光り

Hirokazu Fukushima (2019)

$\text{♩} = 100 \text{ ca.}$ **A**

22 *rit.* **B** *a tempo* *rit.* **C** **Meno mosso** ($\text{♩} = 96 \text{ ca.}$)

35 *mp* *mf*

41 **D** *f*

46 *rit.* **E** $\text{♩} = 112 \text{ ca.}$ **F** *mp* *mf*

60 **G** *f*

66 *ff*

Tuba in E^b (Bass Clef)

71

H

I



mf

84

J



mp

89



f

mf

95

K



f

100

rit.



ff

dim.

mp

105

L

♩=86 ca.

rit.

M

♩=80 ca.

rit.



p

mf

p

123

N

♩=72 ca.

O



mf

f

134



mf

ff

Tuba in E^b (Bass Clef)

140 **P**

mf

148 **Q** ♩ = 160 ca.

f *mp*

153

158 **R**

163

168 **S** **T**

f *mf* *f*

176

mf *f*

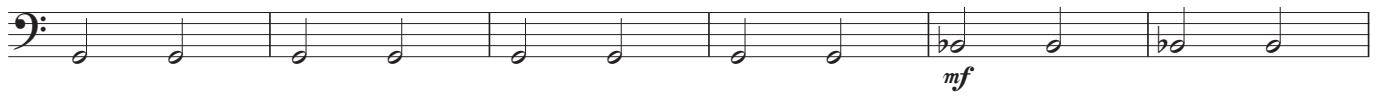
181 **U**

sub.p *ff* *p*

189

Tuba in E^b (Bass Clef)

195 **V**



201 **W**

