

Tuba in E^b
(T. C.)

Commissioned by Tokai University Takanawadai High School

Sinfonietta No. 6 “Blossom of the Heart”

シンフォニエッタ第6番「息吹の花」



福島弘和 作曲

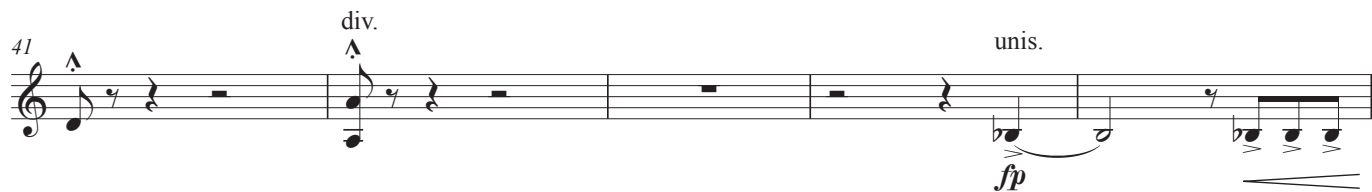
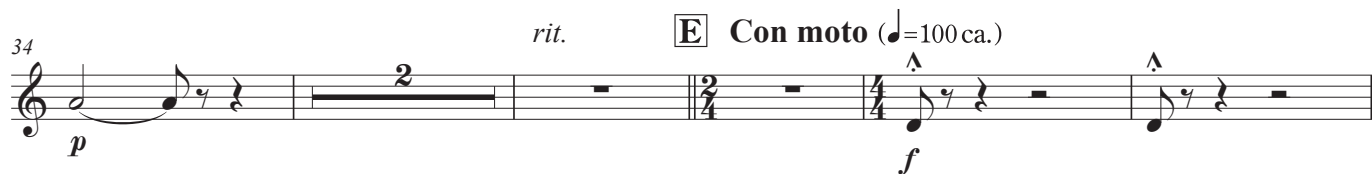
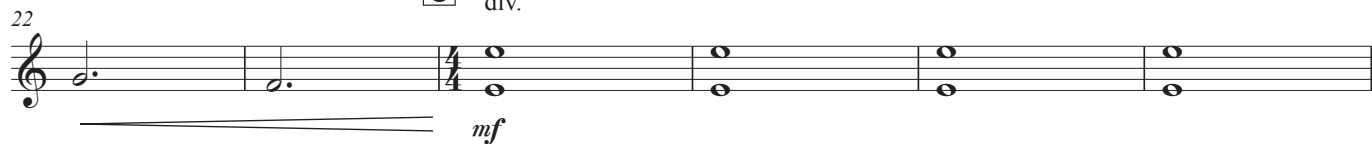
Hirokazu Fukushima (2024)

Lento (♩=60 ca.)

A



C Più mosso (♩=66 ca.)
div.



Tuba in E^b (T. C.)

60 unis. *mf* *f*

65 div. **I** *fp* *ff*

70 *rit.* *mf* *p*

75 *rit.* unis. **J** Andante (♩=72 ca.)

81 **Meno mosso** (♩=66 ca.) **K** Più mosso (♩=76 ca.) *mp* *mf*

89 *rit.* **L** Lento (♩=68 ca.) *p*

98

104 *rit.* **M** a tempo div. *f*

110 unis. div. *rit.*

Tuba in E^b (T. C.)

117 **N** **Vivace** (♩=152 ca.) unis.

123

128 div. **O**

134 unis. **P** div. unis.

139 div. **Q**

147 unis. **R**

153 div. unis. **S**

159 **S**

165

Tuba in E^b (T. C.)

171 **T** div. unis.

177 *molto rit.*

183 **U** **Grandioso** (♩ = 72 ca.)

192 div. *rit.* unis. **V** **Vivo** (♩ = 156 ca.) div. unis.

198 div. unis. **W** div. *ff*

203 unis.

209 **X** div.

214 *rit.*