

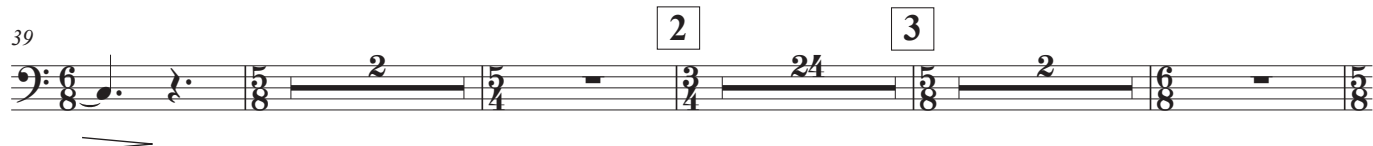
1st & 2nd  
Trombones in B<sup>b</sup>  
(Bass Clef)

A-Winds 奈良アマチュアウィンドオーケストラ委嘱作品

Chirche  
for Wind Orchestra

Chang Su KOH (2016)

♩.=120 ca.



1st & 2nd Trombones in B $\flat$  (B.C.)

97 *f*

102 *a2*

107 *sf sf sf*

113 *sf ff ff*

120 *ff rit.*

127 *molto rit. dim.*  $\text{♩} = 90 \text{ ca.}$

142 *animato* *a tempo* *poco allarg.*  $\text{♩} = 78 \text{ ca.}$  *poco allarg.*

181  $\text{♩} = 90 \text{ ca.}$  *rit.*  $\text{♩} = 120 \text{ ca.}$

196

205

214 *mp*

222 *mf*

1st & 2nd Trombones in B<sup>b</sup> (B.C.)

229

236

242

269

277

286

293

302

311

320

329

338

20

21

1st & 2nd Trombones in B $\flat$  (B.C.)

346 *f*

352 *f*

358 **22** 1st *f*

365 2nd a2 *f cresc.*

371 *ff* *allarg.* *ff*

377 **23** ♩ = 90 ca. *ff* *pesante*

385 *poco allarg.* **24** a tempo 8 *allarg.* 2 **25** ♩ = 78 ca. *ff*

400

407 *allarg.* **26** ♩ = 120 ca. 2 a2 *ff*

415 *accel. al fine* **27**

424 *accel. al fine*

433 *ff* a2 *fff* *sffz*