

Tuba in E^b
(Bass Clef)

Commissioned by Baylor University and Dr. Isaiah Odajima

Fantajia

Chang Su KOH (2016)

Vivace (♩.=156) *al Mute* **1 Pesante** (♩.=60) *poco a poco accel.*

12 *Open* **2 Vivace** (♩.=156) *f*

15

19 *ff*

22 **3** *p* **4**

42 **5**

53 **6** *mp*

59 *mf* *f*

62 **7** *p*

Tuba in E \flat (B.C.)

65 10 a1 Mute 8

p *mp*

78 the other (open)

mf

82 a1 Mute (a1 Mute)

mf

86 the other (open)

mf

90 all (open)

f *cresc.*

94

97 9

ff

100

102 *rit.*

dim. *mf*

106 Andantino (♩.=68) 10 l'istesso tempo (♩.=68)

poco 5 poco

Tuba in E \flat (B.C.)

122 **11** **16** **4**

144 *mf*
allargando
f

148 *cresc.* **13** **Sostenuto** (♩=64)
ff

152 **Con moto** *allargando*

157 **Lamentabile** *cresc.*
fff *f* 7

161 **14** **Molto Pesante** (♩=48) *poco a poco accel.*
sf *sf* *sf* *sf*

164 **Pesante** (♩=60)
sf *sf* *sf*

167 *poco a poco accel.*
sf *sf* *sf* *sf* *sf* 15

170 **15** **Vivace** (♩=156)
f

174 *ff*

178 **16** 9
mf

Tuba in E \flat (B.C.)

190 **17**

f p f

196 **18**

f p f

200

mp

206 **19** *poco a poco accel.*

mf

209

f cresc.

212

f cresc.

215 **20** (♩=♩) $\text{♩} = 136$

ff

219

ff

223

ff

227

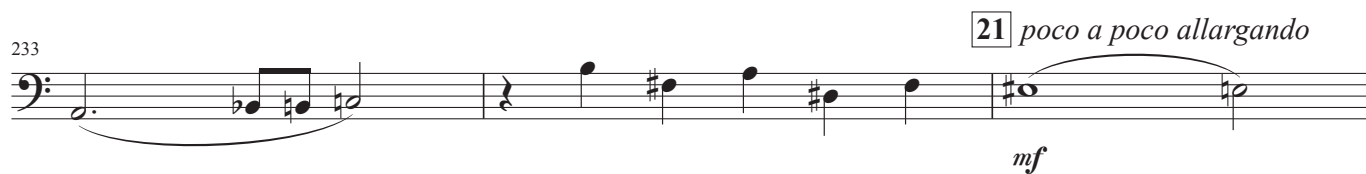
ff

Tuba in E \flat (B.C.)

230



233



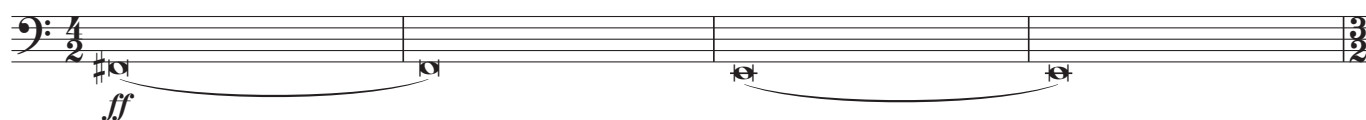
236



240



245 **22** Sostenuto (♩=64)



249



252

Lamentabile



256

23 Vivace (♩=156)



262



265

