

Euphonium in B \flat

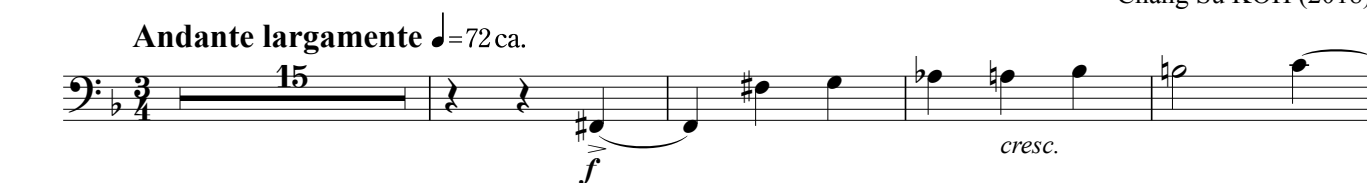
Commissioned by Tokyo Ryusei Symphonic Band

Triplo Triplum

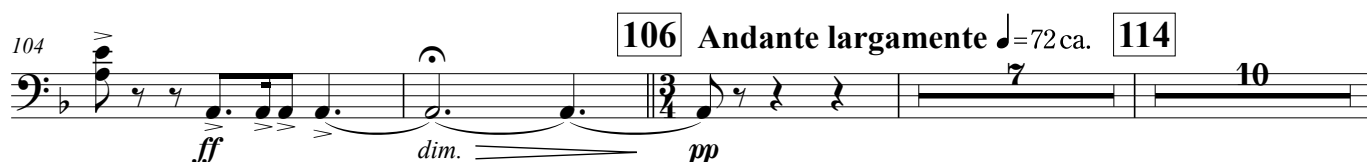
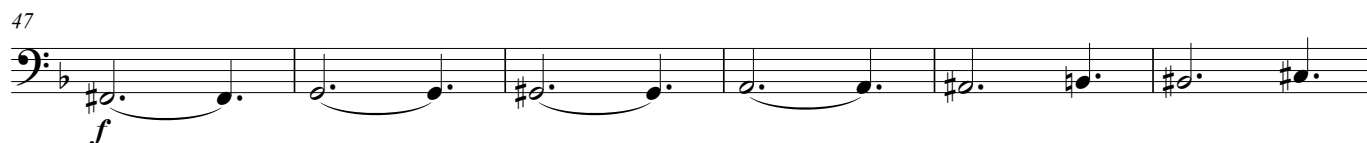
for Wind Orchestra

Chang Su KOH (2018)

Andante largamente $\text{♩} = 72 \text{ ca.}$



21 Allegro energico $\text{♩} = 114 \text{ ca.}$



Euphonium in B \flat

124 **124** **132** *agitato* - - - - -
 8
 mp *cresc.*

molto allarg. - - - - -
 136
 mf *cresc.* *f cresc.*

141 *a tempo*
 141
 ff

molto allarg. - - - - -
 147
 cresc.

153 *Allegro energico* ♩ = 114 ca.
 153 **173**
 18 7
 fff ff

182 *Pesante* ♩ = 64 ca. *poco a poco agitato* - - -
 181
 dim. mf *cresc.*

185
 f *cresc.*

190 *Allegro energico* ♩ = 114 ca.
 190
 ff

Euphonium in B \flat

195

f

199

203

cresc. *ff*

207 **207**

ff

213

poco a poco allarg.

219

cresc. *fff*

225 **225** Più mosso ♩=100 ca. *allarg. al fine*

mf *cresc.* *f*

235

ff *ffp* *ff*