

**Tubas in E<sup>b</sup>**  
**(Bass Clef)**  
**(Div.)**

Commissioned by Otsu Symphonic Band and dedicated to Yoichi Morishima, Music Director

# NIGHTPHONY

for Wind Orchestra

Chang Su KOH (2019)

**Pesante** ♩ = 60 ca. 16 **Allegro** ♩ = 112 ca. 25

27 *a tempo* (♩ = ♩.) *molto rall.* - - - *accel.* - - - - -

31 - - - - - 32 (♩ = ♩.) ♩ = 112 ca.

34

37 (♩ = ♩.) *meno mosso* 40 **Moderato** ♩ = 84 ca.

43

52 52 **Con moto** ♩ = 90 ca.

*dim.* *mf cresc.* *f*

Tubas in E<sup>b</sup> (B.C.) (Div.)

58 *poco rall.* - - - *a tempo* ♩ = 84 ca. 62

*ff* *dim.*

66 74 **Con moto** ♩ = 90 ca.

*f*

76

*dim.* *mf cresc.*

81 *molto rall.* - - - *accel.* - - - - - *a tempo* ♩ = 84 ca. *allarg.* - - -

*f* *ff* *p*

87 **Pesante** ♩ = 60 ca.

*sfz* *mp* *f* *mp*

93 93 *accel.* - - - 101 **Allegro** ♩ = 112 ca.

*mp*

103

*mp*

112 115

*mf* *f cresc.*

Tubas in E<sup>b</sup> (B.C.) (Div.)

122 **122** **129**

*f* *cresc.*

132

*ff*

137 **139**

*ff*

141

(♩ = ♩) *molto rall.* - - - *accel.* - - -

*ff* *ff*

145 **147** (♩ = ♩) **Poco pesante** ♩ = 90 ca. *rir.* - - -

*f*

149 **Largo** ♩ = 48 ca.

*dim.* *pp*

153 **154** **Doloroso** ♩ = 66 ca.

165 *all* *mp cresc.* *allarg.* - - - **Grandioso** ♩ = 84 ca.

*mp cresc.* *ff*

Tubas in E<sup>b</sup> (B.C.) (Div.)

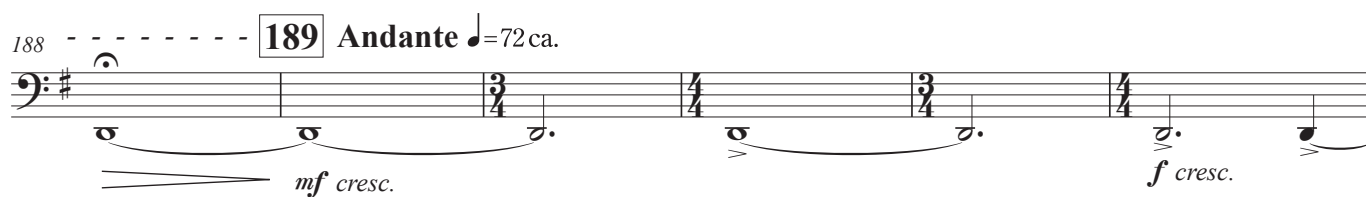
171



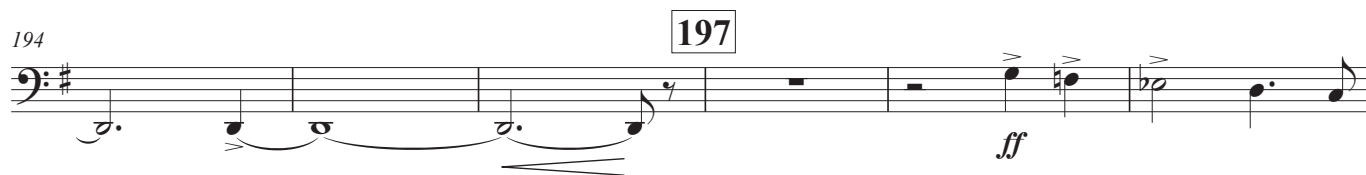
182



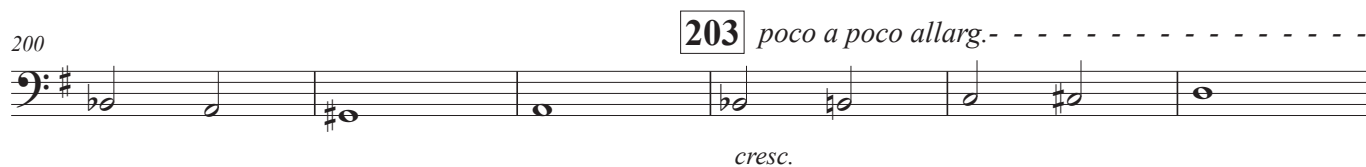
188



194



200



206

