

**Tuba in E<sup>b</sup> (Div.)**  
**(Treble Clef)**

Commissioned by Hamamatsu Seisei High School Band

**VERITAS**  
*for Wind Orchestra*

Chang Su KOH (2021)

**Largo** ♩ = 48 ca. 9 **con moto** *allarg.* - - - - - *a tempo*

19 *poco a poco accel.* - - - - - 22 ♩ = 40 ca. ♩ = 60 ca.

32 **Allegretto ritomico** ♩ = 87 ca. 35

43 43 51

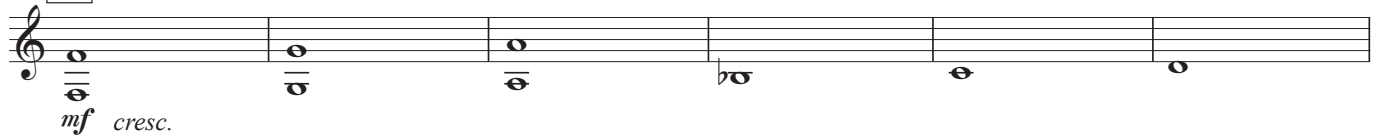
59 *f cresc.*

63 63 *rit.* - - - - - *dim.*

71 74 **Largo** ♩ = 48 ca. **con moto** *rall.*

Tuba in E<sup>b</sup> (Div.) (Treble Clef)

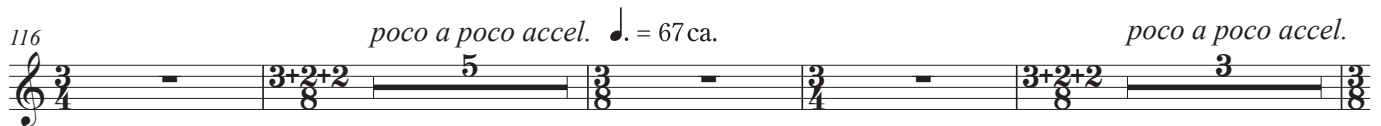
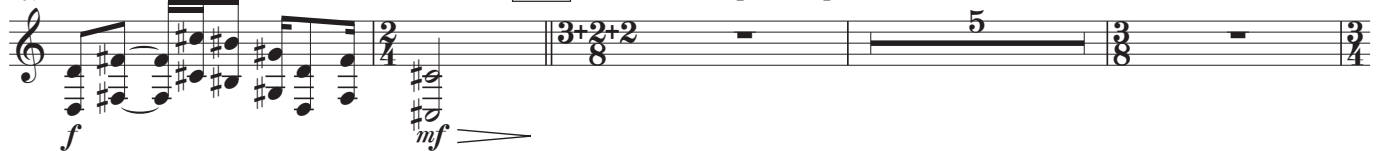
88 **88** Andante ♩ = 60 ca.



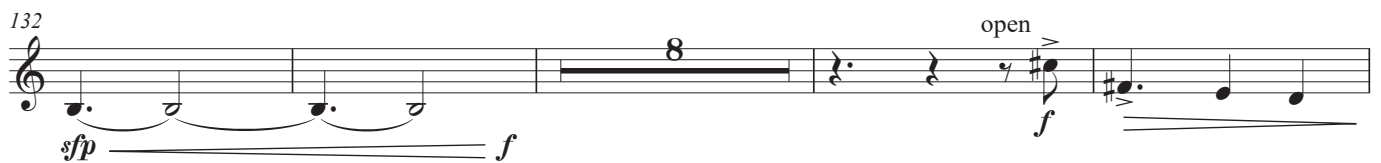
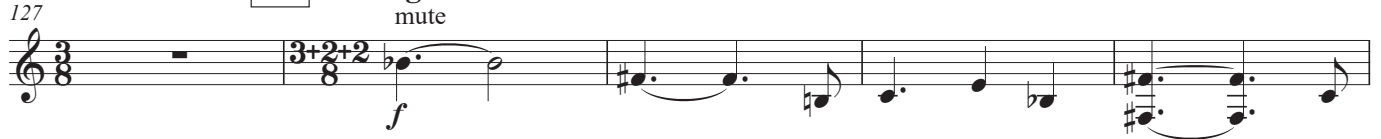
94 **96**



107 **109** ♩ = 40 ca. poco a poco accel. - - - - - ♩ = 52 ca.



127 **128** Allegretto ritomico ♩ = 87 ca.



144 **144**



Tuba in E $\flat$  (Div.) (Treble Clef)

