

1st Trombone in B<sup>b</sup>  
(T. C.)

4つの奄美島唄によるリトルネッロ

Ritornello with Four Amami Island Songs

Chang su KOH (2020/2023)

あさばな Asabana

**a piacere** ♩ = 48 ca.

*rubato a tempo*

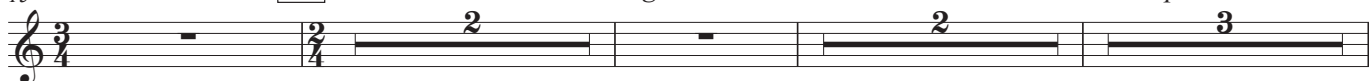
11



15

16

*agitato* - - - *rubato* - - - - - *a tempo*



いにすり Inisuri

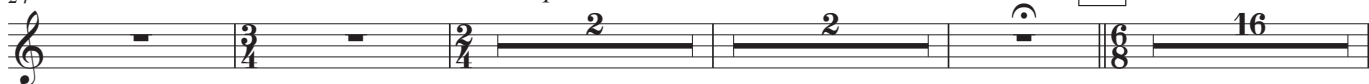
24

*rit.* - - - - -

*a tempo*

*rit.* - - - - -

31 **Allegro** ♩ = 126 ca.



47

47

60

73

cup mute

*mf*



78

83



84

98

open

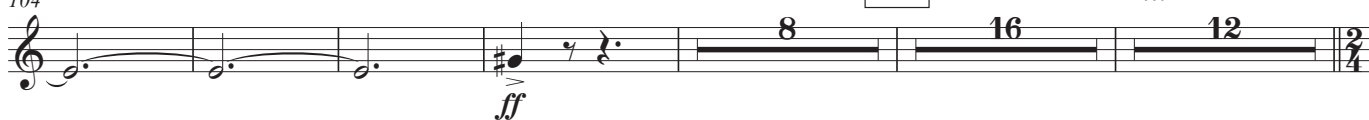
*f*



104

116

*rit.* - - - - -



144

**Tempo I** ♩ = 48 ca.

*allarg.* - - - - -

157

**Pesante**

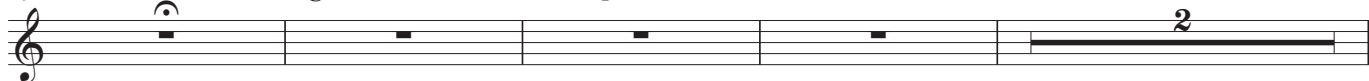
*molto allarg.* - - - - -



162

*agitato* - - - - - *a tempo*

*rubato* - - - - -



1st Trombone in B<sup>b</sup> (T. C.)

168 *a tempo* 3 *rit.* 2 *a tempo* 2 *rit.* 2

ちゅっきゃりあさばな Chukkyariasabana

178 **Allegretto** ♩ = 114 ca.

*p cresc. mp*

[illegible]

192

195

The image shows a musical score for measures 192 through 195. The key signature is B-flat major (two flats). The time signature is 3/4. The melody consists of eighth notes, often beamed in pairs. Measure 192 starts with a treble clef and a key signature change from one flat to two flats. Measures 193, 194, and 195 continue the melody. Measure 195 ends with a 3/4 time signature. The number 195 is highlighted in a box above the staff.

199

Exercise 199 is a single-staff piece in 3/4 time with a key signature of two flats (B-flat and E-flat). The melody is written on a treble clef staff. It begins with a quarter rest, followed by a quarter note B-flat, a quarter rest, and a quarter note E-flat. The next measure contains a quarter rest, a quarter note D-flat, and a quarter note C. The third measure has a quarter note B-flat, a quarter rest, and a quarter note D-flat. The fourth measure features a quarter note C, a quarter rest, and a quarter note B-flat. The fifth measure has a quarter note A, a quarter rest, and a quarter note G. The sixth measure contains a quarter note F, a quarter rest, and a quarter note E-flat. The seventh measure has a quarter note D-flat, a quarter rest, and a quarter note C. The eighth measure consists of a quarter note B-flat, a quarter rest, and a quarter note A. The piece concludes with a final quarter note G.

206 **206** **219** *agitato* - - - - -

The first staff of the musical score for 'The Great Gate of Kiev' is shown. It begins with a treble clef, a key signature of two flats (B-flat and E-flat), and a common time signature. The staff contains a series of rhythmic markings: a bar with a '13' above it, a bar with a '4' above it, a bar with a '3' above it, a bar with a '2' above it, a bar with a '10' above it, a bar with a '3' above it, and a final bar with a '12' above it. The staff is divided into measures by vertical bar lines. The tempo marking 'agitato' is written above the staff, followed by a dashed line. The measure numbers 206 and 219 are indicated in boxes above the staff.

237 六調 Rokucho

Presto ♩ = 198 ca.

237

*ff*

2

*f*

266

ff

271

Example 10-10

1st Trombone in B<sup>b</sup> (T. C.)

276 *accel.* - - - -

281 **286** *Allegretto* ♩ = 114 ca. *ff*

*agitato* - - - - **305** *f* *ff*

**Prestissimo** ♩ = 210 *agitato* - - - - *f* *poco a poco cresc.*

317 *ff*

(♩ = ♩.) **Subito Tempo I** ♩ = 48 ca. **322** *molto allarg.* - - - - *a tempo* *agitato* - - - - *rubato* - - - -

322 *fff* *fff* *ff*

*a tempo* *allarg.* - - - - *mf* *f* *più f* *ff*

339 **Presto** ♩ = 198 ca. *sfp*

344 *ff*