

2nd Horn in E \flat

The Kinght of the Sky

Fantasy for Wind Ensemble

Kataoka Hiroaki (2013)

$\text{♩} = 60 \text{ ca.}$ **A** $\text{♩} = 70 \text{ ca.}$ **B**

10 $\frac{2}{4}$ mp

18 mf mp cresc.

23 f mp ff mf dolce

28 rit. **C** $\text{♩} = 130 \text{ ca.}$

34 **D** mp f

47 **E** f mf marcato $\text{f} <$

52 **F** ff f

56 **G**

61 f 6

66 **H** mp

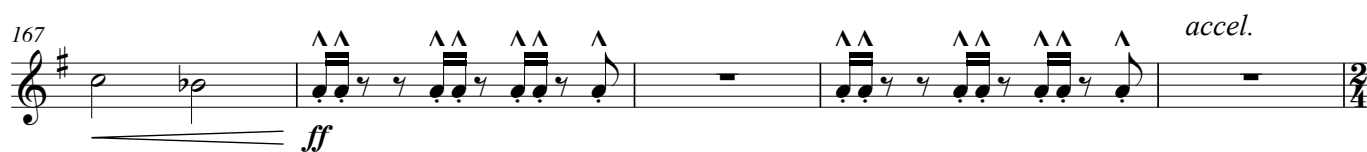
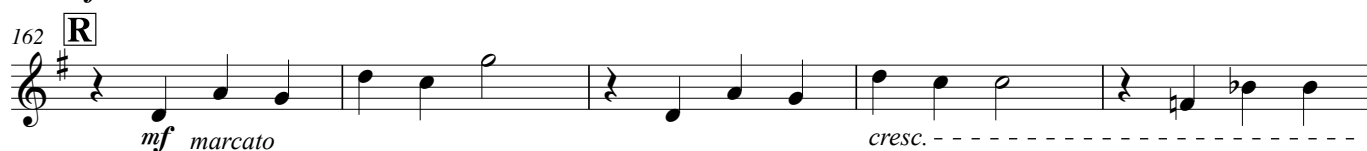
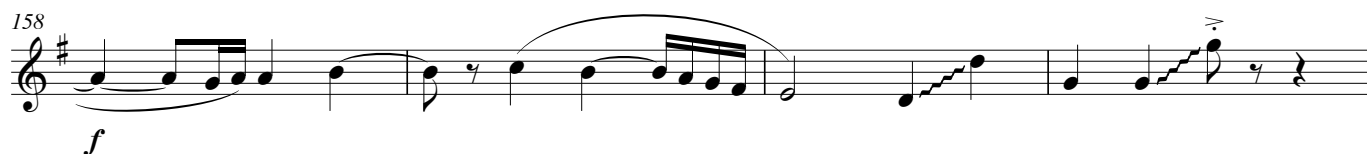
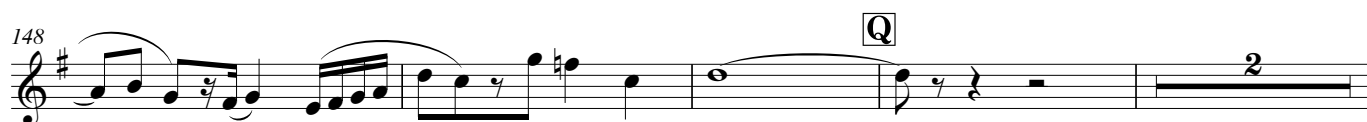
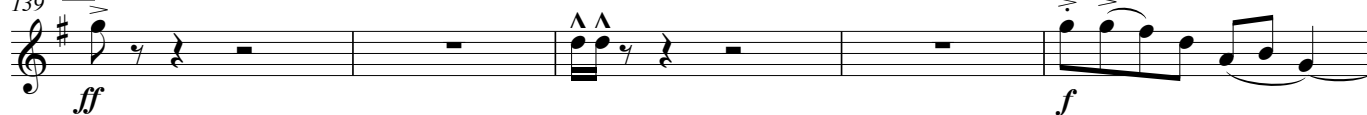
2nd Horn in E^b[illegible]

2nd Horn in E^b

129 **O** ♩ = 130 ca.



139 **P** ♩ = 140 ca.



172 **S** ♩ = 150 ca.

