

1st Trombone in B^b
(T. C.)

Commissioned by Hitachi Citizens Wind Orchestra
Always the Way Remains



Jun Nagao (2024)

♩ = 80

1

6

p *mf* *mf*

11

p *f* *fp* *mf* *f* *mp*

15

2

f *p* *f* *fp* *f* *f* *mp*

20

3

♩ = 96

f *mp* *ff*

25

2

30

4

mp *f* *mp* *mf* *mp*

36

5

f *mf* *f* *ff mp* *ff mp*

42

ff mp *ff mp* *ff* *in tempo* *ff* *sostenuto*

47

6

mf *f* *p* *ff*

52

7

♩ = 72

ff *mf*

57

p *mp* *mp* *f*

63

8

♩ = 84

Cup Mute

6

9

mp

1st Trombone in B^b (T. C.)

10 ♩=96

82 Open



11



95 12 13 ♩=84



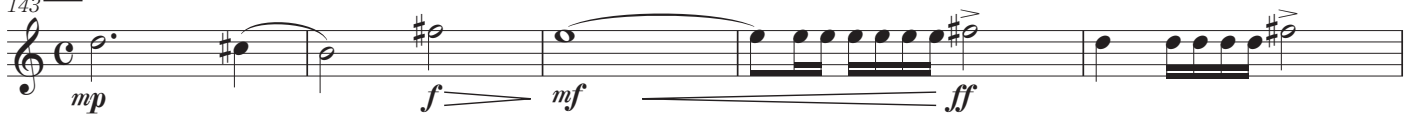
15 ♩=92



121 16 ♩=46



17 ♩=138



1st Trombone in B^b (T. C.)

18 ♩ = 160

153 *fp* *ff* 3

159 *ff* *mf* 3

164 *ff* *mf* *ff*

170 *mf* *f* *mp* *f* *ff* *p* *ff* *riten.*

176 *mf* *ff* *mf* *f* 3

182 *ff* *pp* 6 3

188 *mf* 6 3

193 *ff* *mf* *f* *f* *ff*

199 *fp* *ff* *mf* *ff*

204 *mf* *ff*

210 *ff* 2

1st Trombone in B^b (T. C.)

217 $\text{♩} = 80$

p *f* *f* *f* *mp*

223 **26** $\text{♩} = 84$

mf *mp* *mf* 3

230

f *f* *mf* *ff*

236 **27** $\text{♩} = 96$

mp *mf*

243

ff *mp* *ff* *f*

247 **28** $\text{♩} = 116$

ff *f* *fp* *mf*

252

f *ff*

256

f

riten.

260 **29** $\text{♩} = 69$

ff 3