

Bass Tuba in B \flat
(B. C.)

NOBUNAGA

A Shaft of Light in the Renaissance

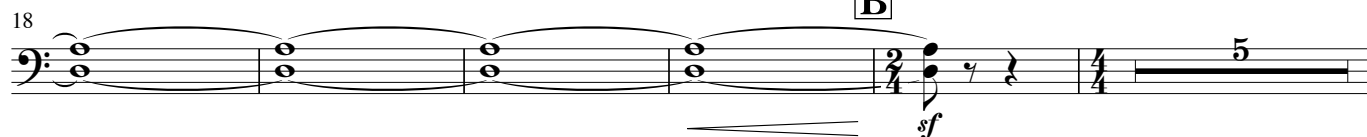
Eiji Suzuki op.66 (2006)

Tempo giusto $\text{♩} = 76$

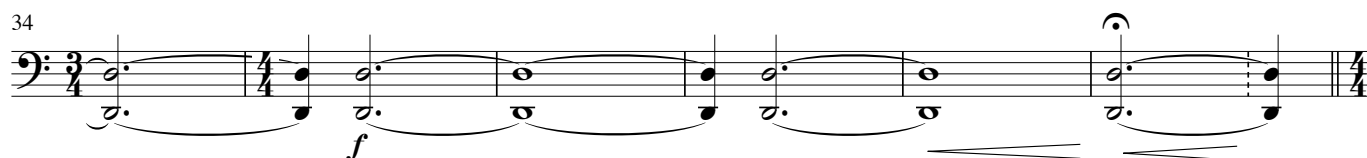
A



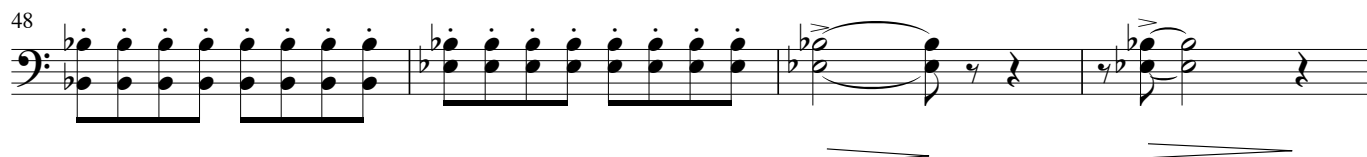
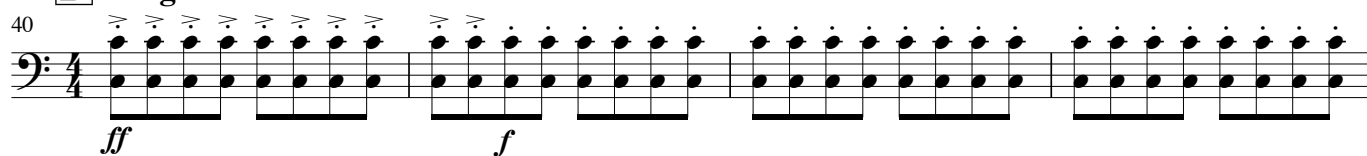
B



C $\text{♩} = 80$



D Allegro $\text{♩} = 112$



Bass Tuba in B \flat (B. C.)

52 E

f

56 F

60 G H

p *mf* *f*

80

84 I J

p

98

105

K poco meno mosso $\text{♩} = 96$
(Josquin Desprez "Mille regretz")

111 L

p

Bass Tuba in B \flat (B. C.)

137

mp *mf*

143

f *mf*

M

149

f *mf*

155

f *mf* *mp*

161

p *f*

N risoluto $\text{♩} = 88$

O $\text{♩} = 76$

178

f *ff*

184

allarg. *ff*