

Tuba in E^b
(B. C.)

Commissioned by the Symphonic Band of Ryukoku University

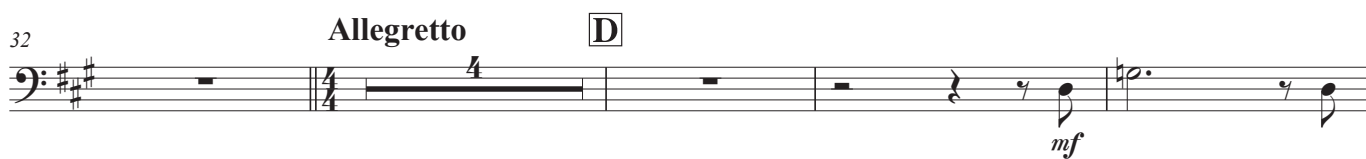
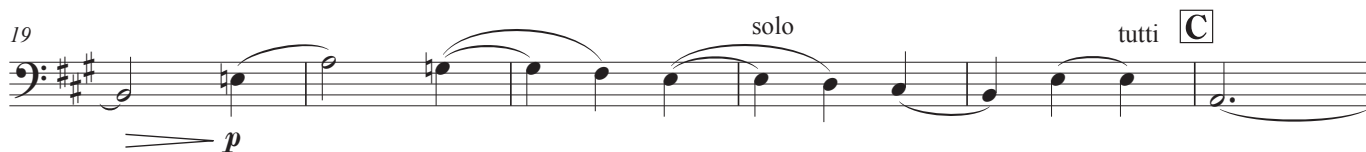
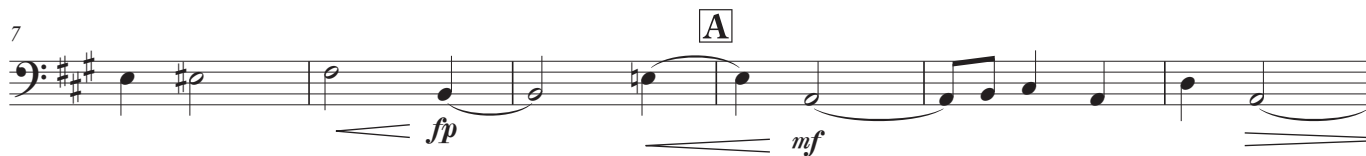
波の通り道

Path of the Waves

酒井 格

Itaru Sakai (Jul. 2006)

Lento con espressione



Tuba in E \flat (B. C.)

50

p *mf* *mp* solo

55

f *p*

61

fp *mp* *f* *p*

65

p *f* *p*

70

fp

76

82

fp

88

mp

Tuba in E^b (B. C.)

93



99

K



105

rit.

Tempo I



111

L



118

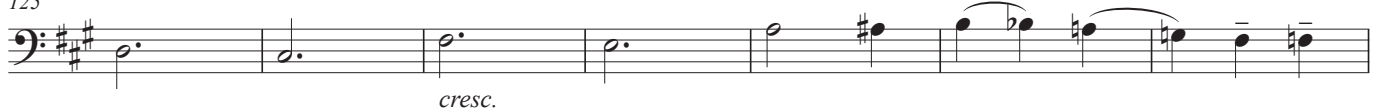
poco a poco accel.

M



125

rit.



132

N

a tempo

O



139

