

2nd Trombone in B \flat
(Bass Clef)

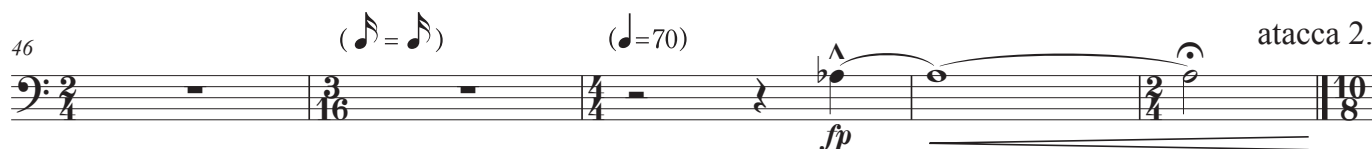
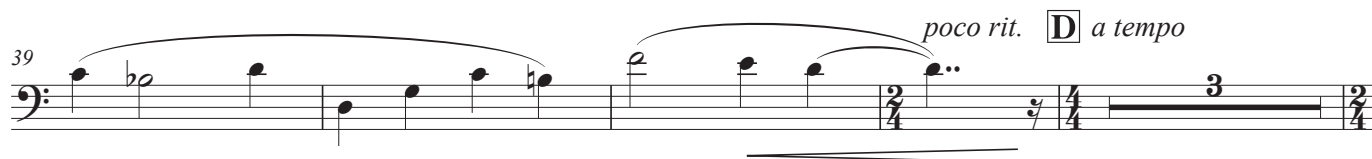
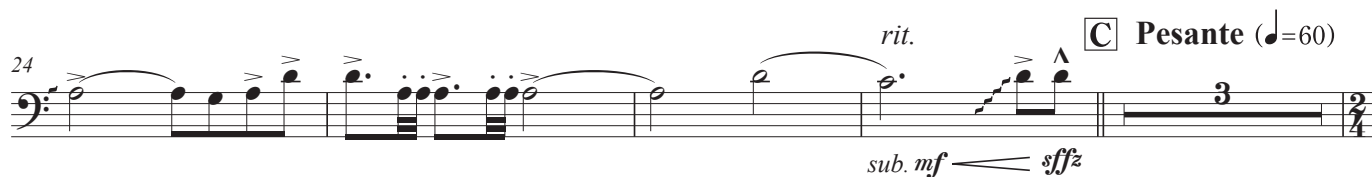
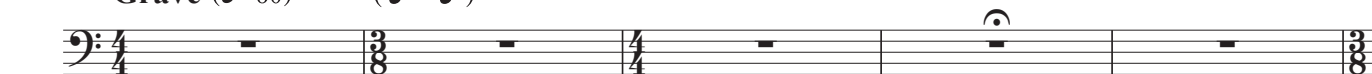
Commissioned by SONORE WIND ENSEMBLE for 20th Anniversary Regular Concert

蒼氓愛歌
～三つの異なる表現で～
Song of Gaia
～Prelude, Dance and Song～

Composed by Daisuke Shimizu
(2012)

一、序 (Prelude)

Grave (♩=60) (♩ = ♩)



2nd Trombone in B^b (B.C.)

二、舞 (Dance)

Agitato (♩.=100) (♩.+♩.+♩.)

51 *ff* *ffp*

59 *mf* *ffp*

65 *ff*

77 *mf* *f*

81

86 *f* *ff*

93 **Pesante** (♩.=96) **Agitato** (♩.=100) *sfz*

106 *mf* *f*

111 *ff*

116 *ffp* *ff* *sfz* *molto rit.* *attacca 3.*

三、歌 (Song)

Pregando

121 (♩.=60) (♩.=120) *mp* *mf* *ffp*

2nd Trombone in B^b (B.C.)

134 **M**

mp *mf*

Free tempo, but WW, Piano, Perc. 2/4/5 are $\text{♩} = 120$

Chorale group (Cb Cl., Tpt. 1, Horns, Trbs., Euph., Tuba, St. Bass) are very slow ($\text{♩} = 40-46$)

Play by conductor cue

Sizzle Cymbal
signals ending

145 **N**

f molto tenuto

146 **O**

mf tenuto

151

f

156 **P**

f

161

poco a poco cresc. *ffp*

166 **Q** **Maestoso**

ff *f*

171

rit. *ff*

176

f

181 **S** **Brillante** ($\text{♩} = 66$) ($\text{♩} = 132$)

molto rit.

185

fffp *sffz*