

Tuba in B^b

Gold Rush!

for Wind Ensemble

Composed by
Shin'ya Takahashi, 2002

Allegro animato (♩ = ca. 144)

The musical score for the Tuba in B^b part of "Gold Rush!" is written in treble clef with a key signature of one sharp (F#). The tempo is marked "Allegro animato" with a quarter note equal to approximately 144 beats per minute. The score consists of nine staves of music, each with a measure number at the beginning. The first staff starts with a mezzo-piano (mp) dynamic and a crescendo (cresc.) leading to a fortissimo (f) dynamic. The second staff begins with an "allarg." (ritardando) marking, followed by a section labeled "A" with an "a tempo" marking and a fortissimo (ff) dynamic, then a "molto rit." (molto ritardando) section with a piano (p) dynamic. The third staff starts with an "a tempo" marking and a mezzo-forte (mf) dynamic, followed by a section labeled "B" with a decrescendo (dim.) leading to a mezzo-piano (mp) dynamic. The fourth staff begins with a section labeled "C" and a decrescendo (dim.) leading to a piano (p) dynamic. The fifth staff starts with a section labeled "D" and a fortissimo (ff) dynamic, followed by a section labeled "E" with a mezzo-piano (mp) dynamic and a "con moto" marking. The sixth staff begins with a section labeled "F" and a mezzo-piano (mp) dynamic, followed by a section labeled "G" with a decrescendo (dim.) leading to a piano (p) dynamic. The seventh staff starts with a section labeled "H" and a mezzo-piano (mp) dynamic, followed by a section labeled "I" with a decrescendo (dim.) leading to a piano (p) dynamic. The eighth staff begins with a section labeled "J" and a mezzo-piano (mp) dynamic, followed by a section labeled "K" with a decrescendo (dim.) leading to a piano (p) dynamic. The ninth staff starts with a section labeled "L" and a mezzo-piano (mp) dynamic, followed by a section labeled "M" with a decrescendo (dim.) leading to a piano (p) dynamic.

7 *allarg.* **A** *a tempo* *molto rit.* *ff* *ff* *p*

15 *a tempo* **B** *mf* *dim.* *mp*

22 **C** *ff* *ff* *ff*

39 **D** *ff* *ff* *ff*

53 **E** *mp* *con moto*

60 *cresc.* *mf*

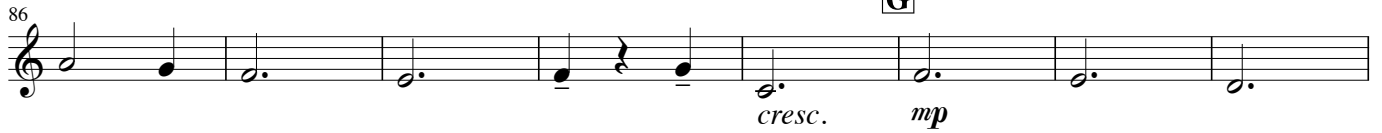
66 *cresc.* *ff*

72 *molto rit.* **F** **Moderato espressivo** (♩ = 76~80) *mf* *dim.* *p*

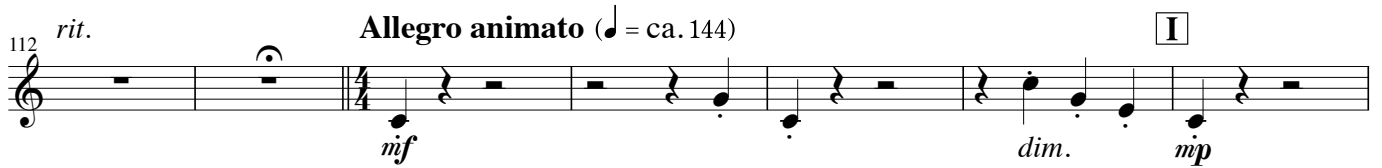
78

Tuba in B \flat

G



H



J



K



L Poco piu mosso

