

2nd Trombone in B $\flat$   
(Bass Clef)

# Sunday Market

Shin'ya Takahashi (2006)

**Andante espressivo** (♩ = ca. 63)

**11** *tempo rubato*



13 *poco accel.* *rit.*

**17** **Allegro Vivo** (♩ = ca. 168)



19



33 **33**



38



43

**45**



48



59 **59**



64

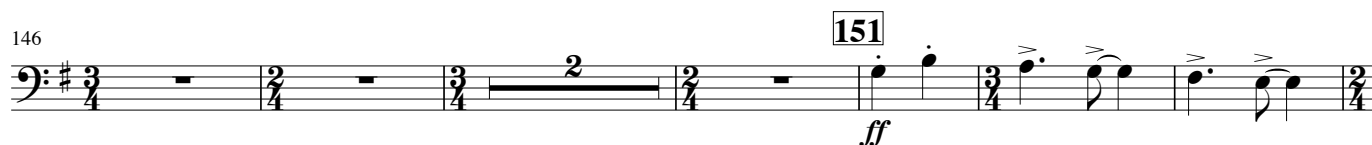
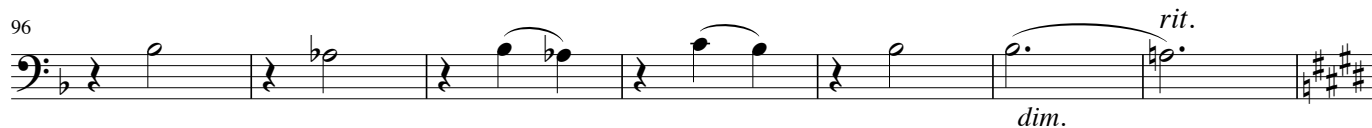


69

**73**



2nd Trombone in B<sup>b</sup> (Bass Clef)



2nd Trombone in B<sup>b</sup> (Bass Clef)

182 **182**

*ff*

189

196 **198** **213** **221**

229 **234**

*f* *ff* *ffp* *cresc.* *f*

235

240

*ff*

245

*cresc.*

**251** Più mosso (♩ = ca. 192)

251

*fff*

258