

Tuba in B \flat

Commissioned by Simpatia Wind Orchestra

Lobby Works

Comp.by Hiroki Takahashi

1. March

$\text{♩} = 126 \text{ ca.}$

8 **A**

14 **B**

19

25 **C**

30 **D**

36 **E**

41

46 **F**

2. Intermezzo

♩ = 70 ca.

G



10

1.

2.

H



19

I



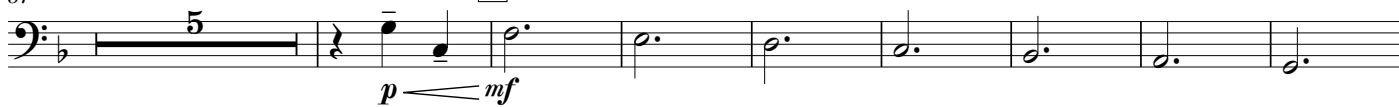
28

J



37

K Più mosso ♩ = 108 ca.



50

rit.



59

L Tempo I ♩ = 70 ca.



Tuba in B^b

3.Dance

$\text{♩} = 152 \text{ ca.}$

M 2nd time only *mf*

7 **N** *f*

13

18 **O** 2nd time only *mf*

27 1. 2. **P** *f*

32 *ff*

37 **Q**

42