

**Tuba in B<sup>b</sup>**  
**(Bass Clef)**

Commissioned by Nakayama Satsukidai Junior High School Band, Takarazuka City

# Gratias Cantare

田村修平 作曲  
Shuhei TAMURA (2020)

**Allegro ma non troppo** (♩=120 ca.)

6

12 *poco rall.* **A** (♩=80 ca.) *meno mosso*

18 **B Andante** (♩=60~63 ca.) *poco rall.* **C Affettuoso** (♩=72~80 ca.)

29 *poco riten.* *a tempo*

35 *rall.* **D Tempo giusto** (♩=72~80 ca.)

41 *rit.* **E Moderato** (♩=58~63 ca.)

47 *cresc.*

53 *allarg.* **F Poco con moto** (♩=66~69 ca.) *pochissimo stringendo*

Tuba in B<sup>b</sup> (Treble Clef)

59 *stringendo* (...♩=100 ca.) *rall.*

64 **G** Allegro (♩=126 ca.)

70

76 **H** Agitato (♩=132 ca.)

83 **I** *molto riten.*

90 **J** a tempo

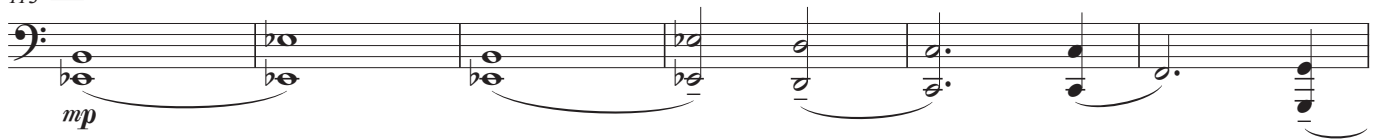
96 **L**

102 **M** *string.*

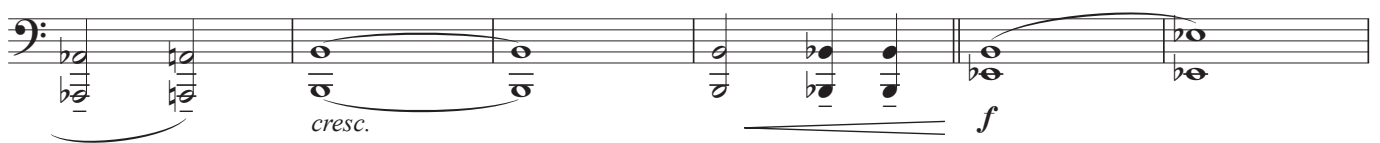
108 *molto rall.* **G.P.**

Tuba in B<sup>b</sup> (Treble Clef)

113 **N** Cantabile (♩=58~63 ca.)



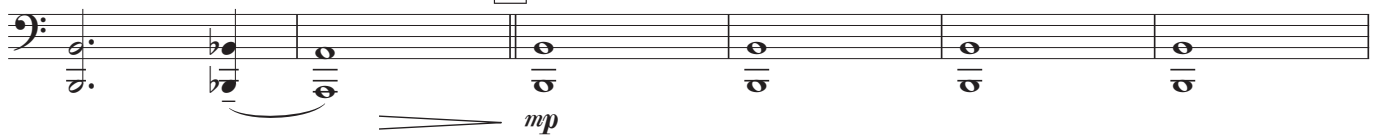
119 *allarg.* **O** Poco con brio (♩=66~72 ca.)



125 *poco rit.* *a tempo*



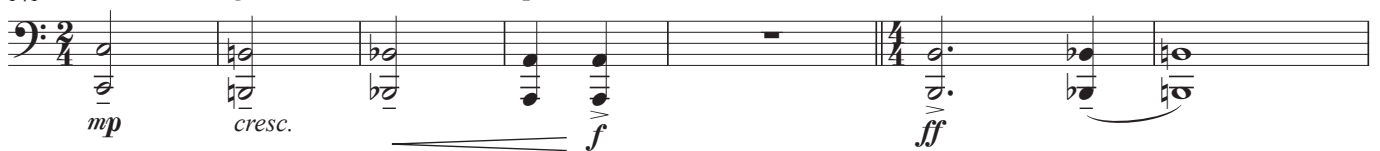
131 **P**



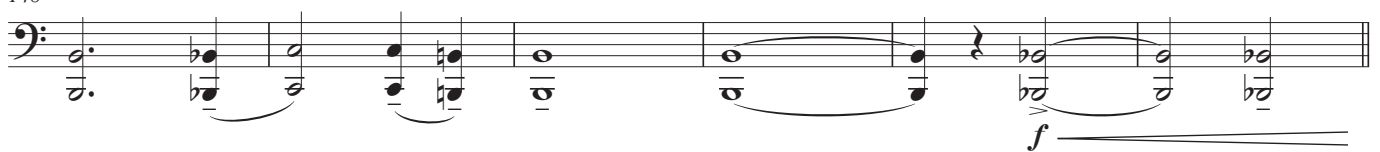
137 *rall.*



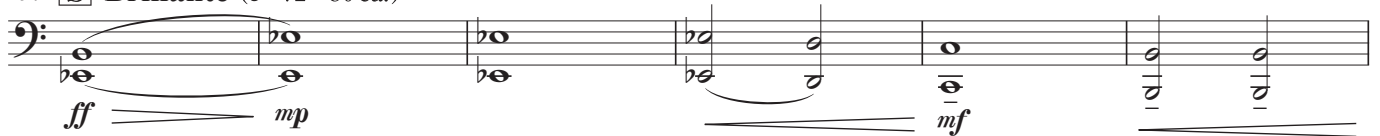
141 **Q** molto stringendo (♩=40 ca.~) *poco rall.* **R** Cantabile con brio (♩=69~72 ca.)



148 *poco rit.*



154 **S** Brillante (♩=72~80 ca.)



160 *poco riten.* *allarg.* **T** Maestoso (♩=66 ca.)



166 *rall.* *meno mosso*

