

3rd Trombone in B $\flat$   
(Bass Clef)

Commissioned by the Ensemble Liberte Wind Orchestra Kawaguchi City, 2004

# Machu Picchu

City in the Sky-The Mystery of the Hidden Sun Temple

Satoshi Yagisawa, 2004

**Brillante**  $\text{♩} = \text{ca. } 96$

*f* 3

4 *poco a poco rit.* 3 3

**A Elegante**  $\text{♩} = \text{ca. } 76$  **B Grandioso (a tempo)** *allargando*

13 *mf* *f* *mf*

**C Piacevole a tempo** *allargando* **D Brillante a tempo** *ritardando*

30 *sfz* *mf* *f* *mp*

45 **E Feroce**  $\text{♩} = \text{ca. } 168$  **F** **G** *mf* *sfz*

84 *f* *poco a poco cresc.* **H** *ff*

89 *mf* *sfz* *mf* **I**

98 *f*

107 **J** *sfz* *sfz* *sfz* *sfz*

114 **K Pesante**  $\text{♩} = \text{ca. } 54$  *allargando*

*mf* *f* *ff* *fff*

## 3rd Trombone

**L Elegiaco**  $\text{♩} = \text{ca.} 60$  **M**

126

**N Feroce**  $\text{♩} = \text{ca.} 168$ 

140



147



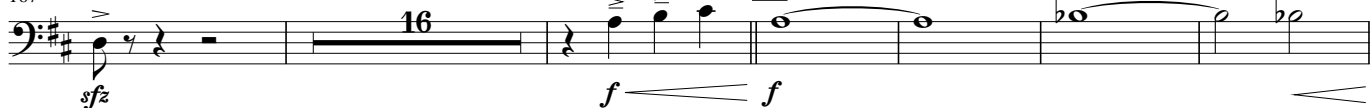
153



160



167



189



197



208

**U Grandioso a tempo**

220

**V Brillante a tempo**

228



233

